



www.lboro-textiles-graduates.co.uk

CACHE
2012



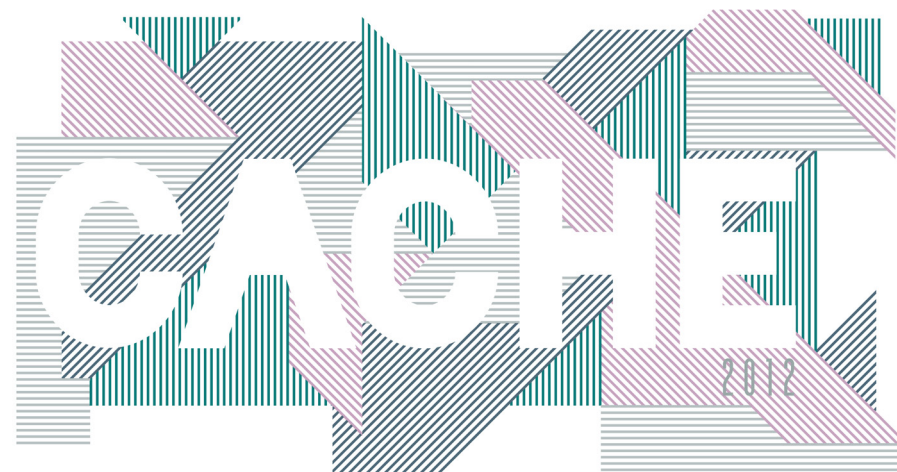
www.lboro-textiles-graduates.co.uk

Published by The School of the Arts, Loughborough University
© 2012 The Artists and Loughborough University

All rights reserved. No part of this publication may be reproduced, stored in a retrieval system, or transmitted in any form, or by electronic, mechanical, photocopying, or otherwise, without the prior permission of the publisher. Within the UK exceptions are allowed in respect of any fair dealing for the purpose of research or private study, or criticism or review, as permitted under the Copyright and Patents Act, 1988, or in the case of reprographic reproduction, in accordance with the terms and licenses issued by the Copyright Licensing Agency.

'Cache 2012' - Textile Degree Show 2012
Loughborough University
The School of the Arts
Loughborough
Leicestershire
LE11 3BT

ISBN 978 1 907382 56 7



Loughborough
15 - 21 June
Loughborough University,
Leicestershire, LE11 3TU

London
12 - 17 July
The Old Truman Brewery,
91 Brick Lane, London, E1 6QL



CONTENTS

Introduction	8
Print	10
Weave	70
Multi-Media	114
Group Photo	150
Acknowledgements	152



CACHE

The Textiles programme at Loughborough University, School of the Arts, is internationally renowned for the calibre of its students and the high standard of work they produce. We have excellent external links, our graduates work all over the world in well respected companies and many are established as individual practitioners. Due to the specialist nature of practice and excellent facilities, the course is known for the disciplines, Print, Weave and Multi-Media Textiles, but particularly for our skilled and competent graduates whose individuality, creativity and innovation, which are widely recognised qualities. In a time of economic depression and concern about employment our students have been educated to be inventive, innovative, professional and hardworking, giving them a head start in a diversity of career paths, and there is a wealth of talent and possibility here waiting to be discovered and developed.

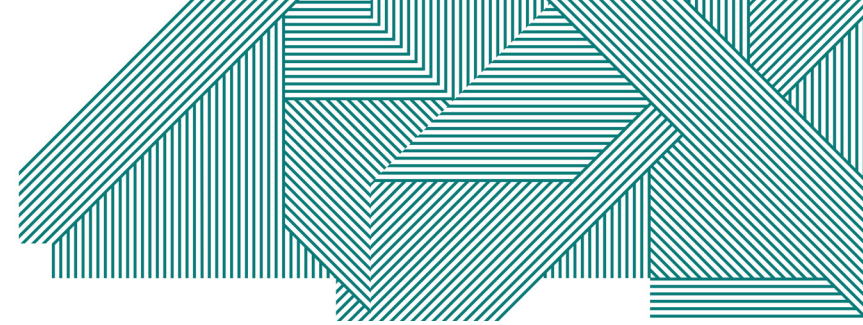
This catalogue, with its accompanying web-pages and exhibition, represents the diversity of the Textiles spectrum: exciting contemporary Textiles practice informed by individual identity and encompassing artefacts for gallery, conventional Textile design, research into innovative materials and processes and the integration of new technologies alongside traditional craft skills.

Each year the graduating students raise a significant amount of money to help promote their portfolios, this year with this catalogue, exhibition and accompanying web pages. It is the result of an impressive amount of planning, entrepreneurial spirit, commitment and team work, and they have once again created an impressive finale to the course. This is a credit to their professionalism and celebrates the end of an exciting and challenging 3 or 4 years at Loughborough, whilst looking forward to the future. This is the point at which our students embark upon new career paths, and as evidenced here, these will extend across a variety of opportunities within the Textiles sector.

There are new challenges ahead for all of you, so the staff would like to take the opportunity to wish you all the best for the future and we hope you enjoy the journey. Cache refers to a hiding place for treasure: there is certainly treasure to be found in this group of graduates but we are all confident that it won't be hidden for long!

Kerry Walton

Programme Leader for Textiles, School of the Arts, Loughborough University



PRINT

Loughborough University has long held an excellent reputation for the Arts, and especially within the field of Textiles, a sector that has changed greatly within this country in recent years. In the face of these changes and the shifting economic climate, the Loughborough University Textile Graduate has had to gain an increasingly broad range of skills in both the traditional processes and the very latest in contemporary digital design skills.

Students graduating from the Printed Textiles pathway in 2012 have gained experience in both projects for interior and fashion applications, and many will have applied these experiences in placement opportunities through our extensive network of placement partners around the world.

This year our graduates have joined an alumni network of talented designers, artists, stylists, creative directors, teachers and lecturers working in the UK and internationally.

I wish this creative, hard-working and highly motivated cohort all the best in their future careers and the challenges that they will encounter, for which they are all extremely well equipped.

Daniel Heath

Printed Textiles Pathway Leader

KATIE AUSTIN

katieaustin999@msn.com

www.katieaustin.co.uk

07930 712425



Placements:

Finisterre - Cornwall, Westcott Print Design Studio - London



Sometimes inspiration is found at home. My Dad's shed isn't just any shed. It's three massive sheds filled with old super computers and vintage electronics. And my Mum's garden is still one of the most beautiful I have seen. Filled with irises, tulips, poppies and roses, fat pigeons and sneaky foxes...



STEPHANIE BALL

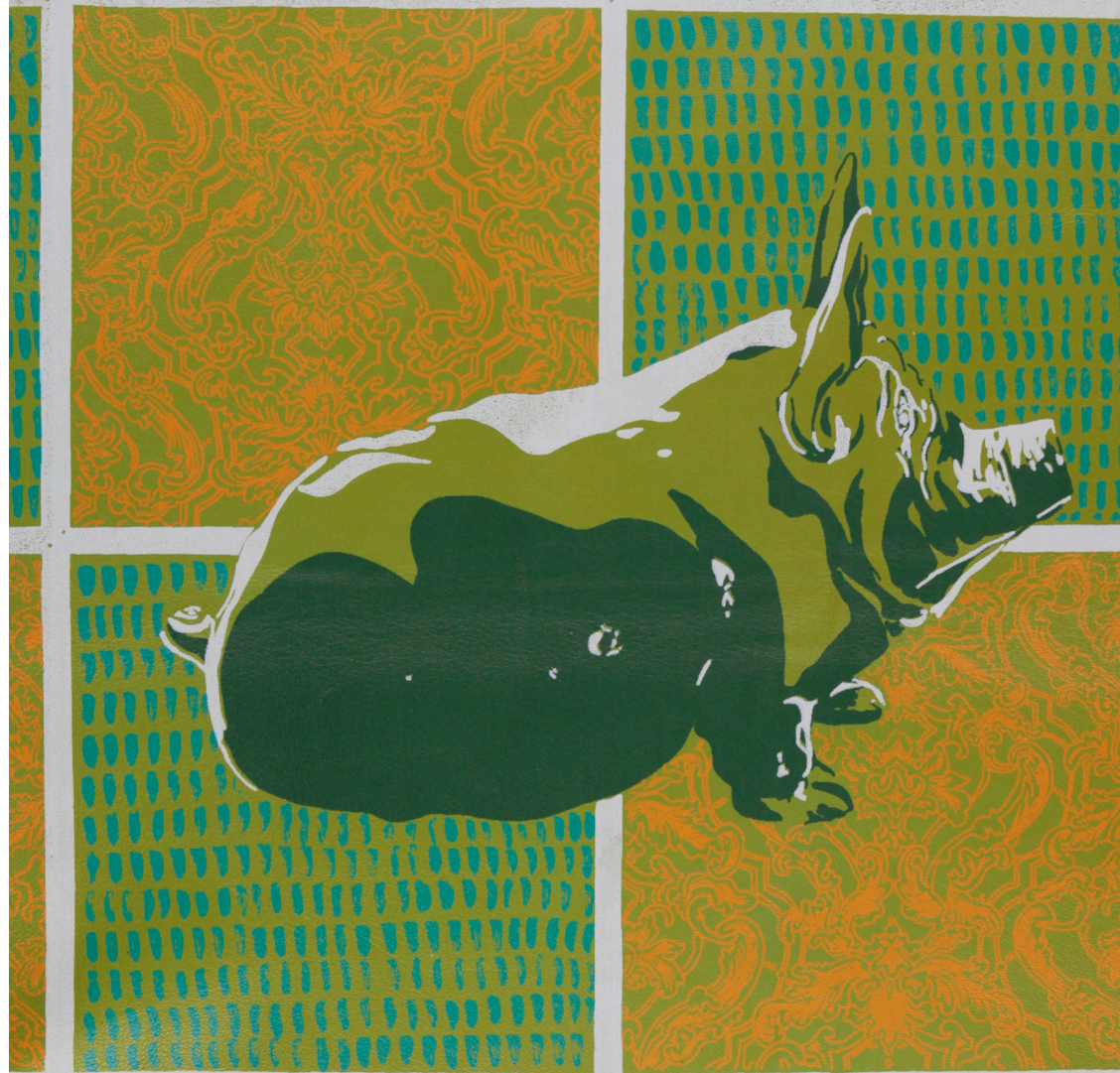
steph.ball11@gmail.com

Placements:

Timorous Beasties - Glasgow



'The House of a Hoarder' is a collection of interior printed textiles celebrating eccentricity through eclectic and illustrative imagery. The use of leathers and luxurious fabrics as well as ceramics, combines a mixture of processes and techniques leading to a highly creative and personal project.



POPPY BOBY

poppy.c.p.boby@gmail.com



Placements:

Marks and Spencer's Ladies Fashion Print Team - London



My work is strongly inspired by animals, nature and natural forms. Drawing is my true passion and is at the heart of all my designs. I produce detailed, colourful prints for fashion or interiors and believe that colour is an important factor that can bring any image alive with emotion.



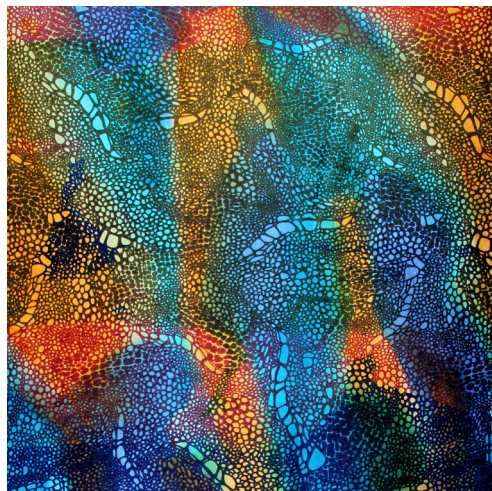
CLAUDIA BORFIGA

claudia@borfiga.com
07982 728799



Placements:

*Mirjam Rouden - London, Giles Deacon - London, John Galliano - Paris,
Angelo Marani - Milan*



My designs evolve from narrative themes, exploring imagery as seen through drawing, observational drawing, sculpture and imagination. I aspire to create printed fabric designs that provoke intrigue and curiosity, in both the aesthetics and physicality.



CAT BOWDEN

catb2@hotmail.co.uk

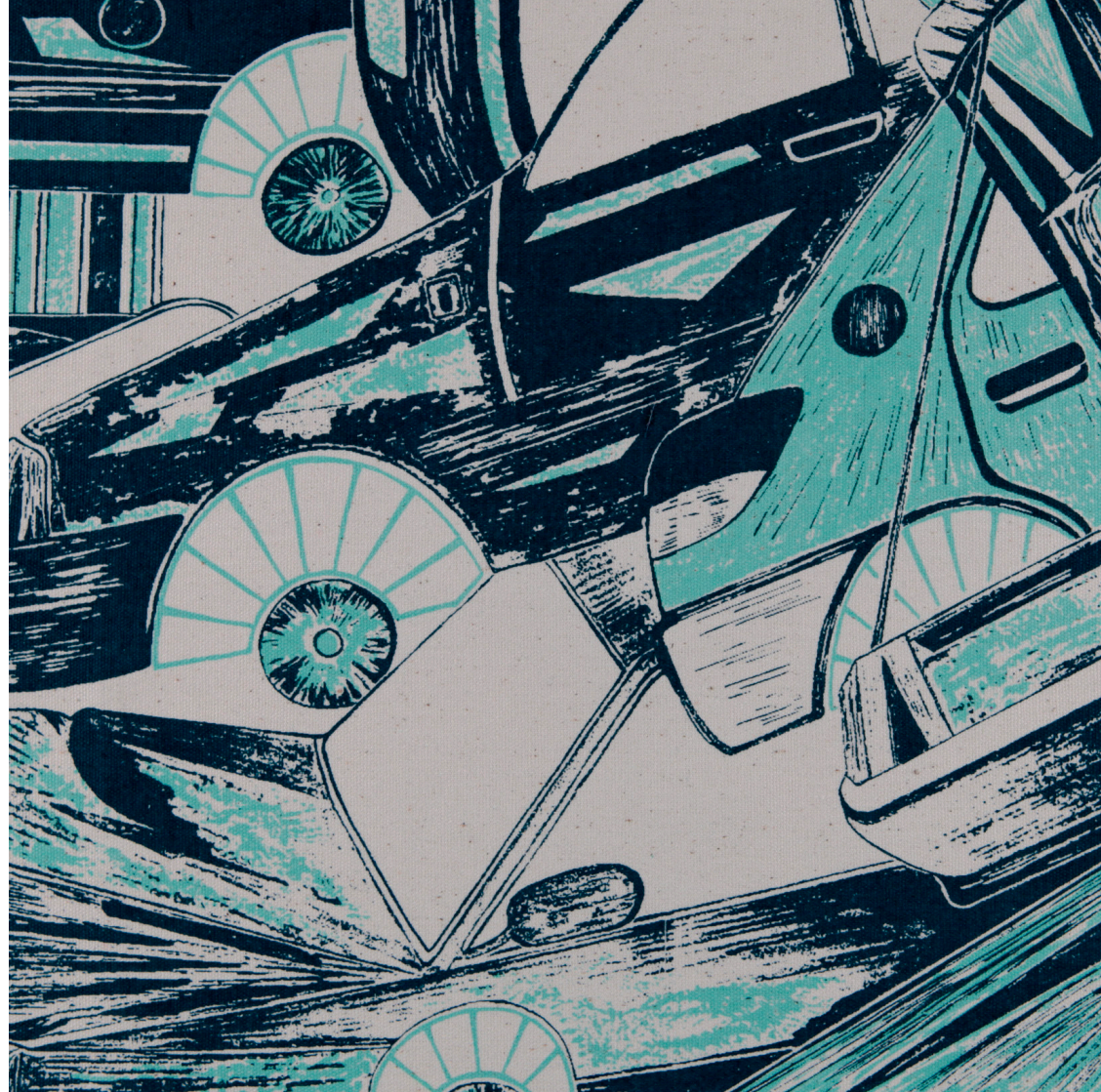


Placements:

The Times Style Magazine - London, *Henry Holland* - London, *Vogue Magazine* - London, *ITV* - London



Free flowing lines and shapes have been a prominent feature in previous projects which I have engineered towards the high fashion market. This has urged me on to tackle a more rustic approach for my final major project. Focusing on imagery taken from scrap heaps I envisage my designs within the interior industry.



EMILY CARNEY

e.l.carney@hotmail.co.uk
07825 750602



Placements:

Eye Dazzler - London, *Nicole Fahri* - London, *Tom Cody* - London, *DVF* - New York



'Emotional Manifestation'
Inspired by the natural world, the eccentric nature of wild animals is encompassed within their unusual facial expressions. The detailed characteristics are transposed onto a multitude of textured surfaces in an effort to bring both aesthetics and touch to life, within vibrant fashion designs.



ELLA CLARK

ellaclark03@gmail.com



Placements:

Anne Kyyro Quinn - London, Marks&Spencer - London, Tom Cody - London & New York



Often taking inspiration from architectural elements, led me to spend time drawing in a linear expression. More recently I explored a natural structure, which has allowed my designs to further explore my use of line and texture in a more challenging way.



ALISON D'OYLEY

a.doyley@btinternet.com



Prizes:

2nd Prize Winner 2010 Goodweave Rug Design Competition



'Between the Lines', my final major project, is inspired by intersecting lines and the complex geometric forms they construct. Referencing modern architecture, this print collection for interiors explores dramatic shape together with a muted, sophisticated colour palette.

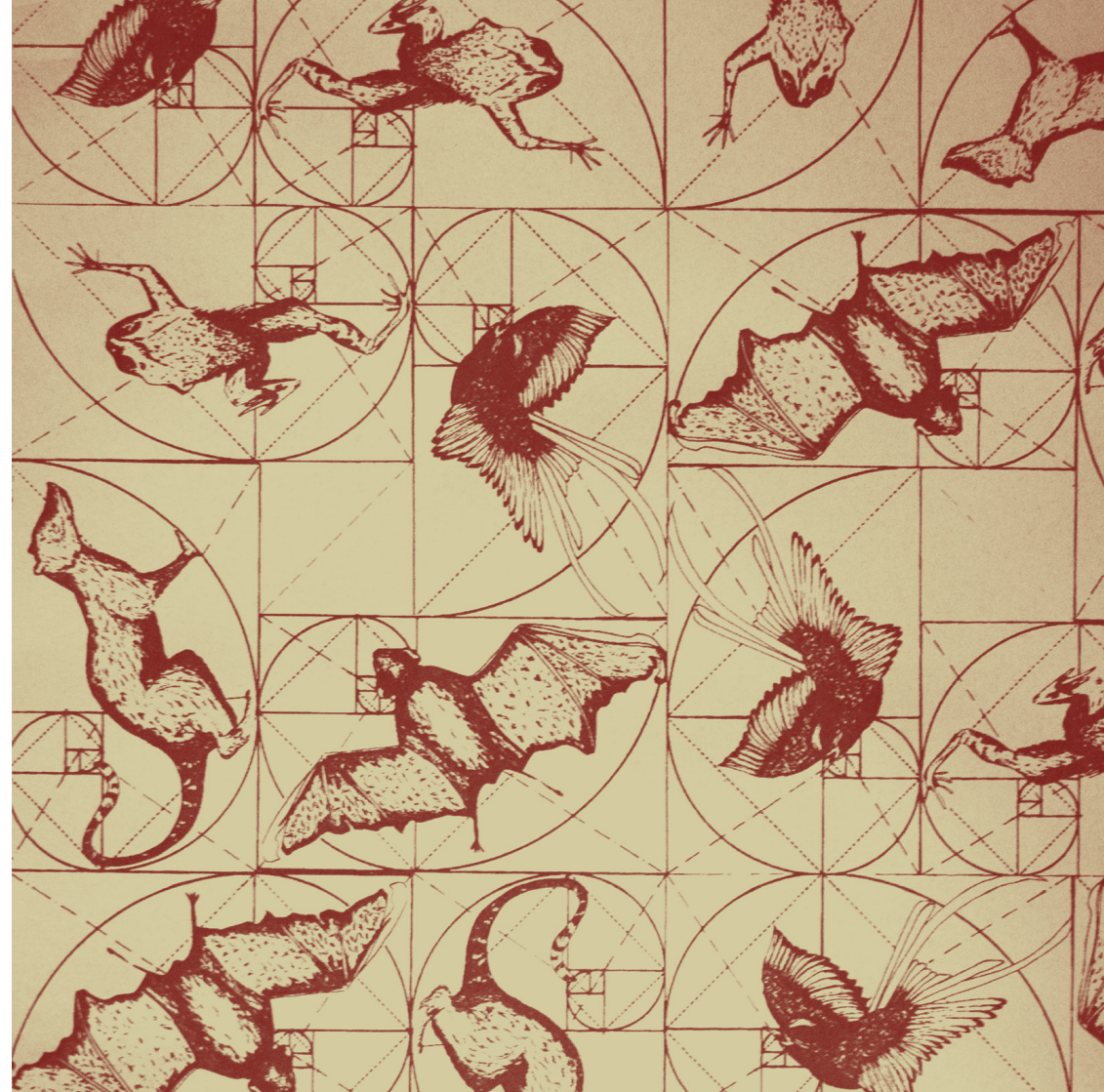


AMELIA EADY

ameliaeady@hotmail.co.uk
07958 081399



An exploration of the relationship between natural life forms and geometry. The imagery produced combines these two conflicting components which, through an enthusiasm for illustration, forms a contemporary interior collection.



BELLA BETHANY FOWLER

bellafowler90@hotmail.co.uk
www.bellabethanyfowler.com
twitter.com/BellaBethanyF



Placements:

Erdem - London



An eclectic feminine Spring/ Summer fashion collection. Imagery inspired by Columbia Road Flower Market. My work evokes an ambience of summer romance and feminine chic. London based fashion print designer with a strong interest in colour, photography and styling. "It is just about looking forward and of course not only in fashion but in everything" Miuccia Prada"



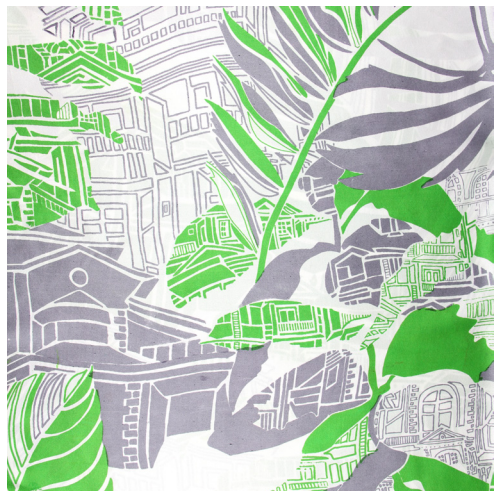
RESHMA GADHIA

resh0001@hotmail.com
07737 395092



Placements:

*Giles Deacon - London, The Colorfield Design Studio - London, Ada Zanditon - London,
Tom Cody Design - London*



By combining man made and organic forms, I am passionate about creating contrasting imagery. Most of my inspiration is drawn from nature, plants and flowers in particular, creating designs using both blocky and linear imagery to achieve different depths within my work.



DAISY GIGG

daisy_gigg@hotmail.co.uk

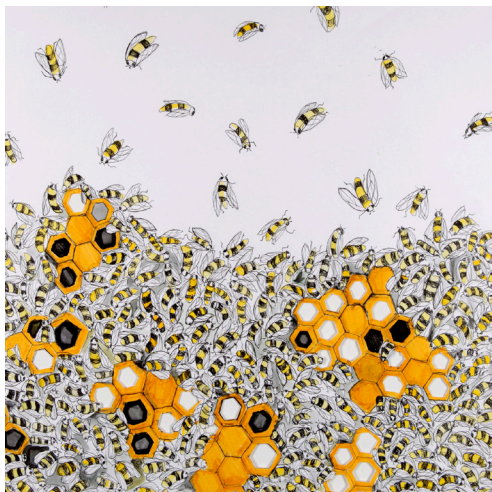


“Some people look for a beautiful place. Others make a place beautiful” Hazrat Inayat Khan.



BECKY GODDARD

becky_goddard4@hotmail.com
<http://eclecticdoodlesanddreams.tumblr.com/>
07540939102



'Insects have always been an exquisite source of inspiration to me. Looking at the contrast in colour, shape, delicacy and the fascinating symbolism that surrounds them has influenced me to create an eclectic set of bespoke items for those who want to challenge the perception of home interiors.'



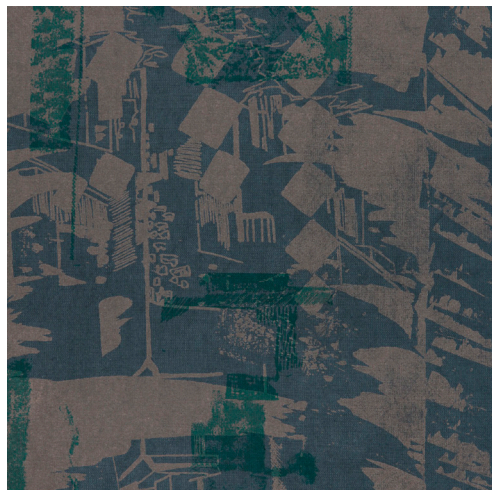
GEMMA GRAHAM

gemmag24@hotmail.com



Placements:

Next - Leicester, *Tom Cody* - London, *James Lakeland* - London

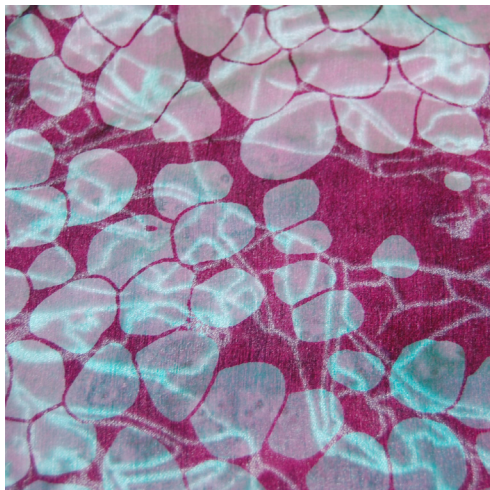


Employing strong mark making skills, exploration of perspectives and a narrative feel, designs are intended for a modern interior purpose. Using a traditional yet individual colour palette, work explores perspective and texture in order to produce a story behind designs.



MEREDITH GRANT

merrygrant@hotmail.co.uk
merrygrace.blogspot.com
silktoes.tumblr.com



Through exploration of line, colour, and composition, I have produced a high-end fashion collection inspired by florals and other natural forms. A combination of hand-rendered and digital print processes has enabled me to create an exciting collection for Spring/Summer rich with colour and context.



LAUREN HART

lauren_hart7@hotmail.co.uk
07891 378072



Inspired by nature my work captures the colour and texture of insects, their patterns and their surroundings. My love for mark making and using different media has enabled me to create a bold and exciting interior collection.



JADE ISSOTT

just-bein-me@hotmail.com



'The Urban Fabric of Life' represents a collection of designs that are based on urban living in central London. I have re-created a range of textures found within our surroundings and combined them with typography to achieve detailed narrative compositions, using a vibrant colour palette and surface manipulation techniques.



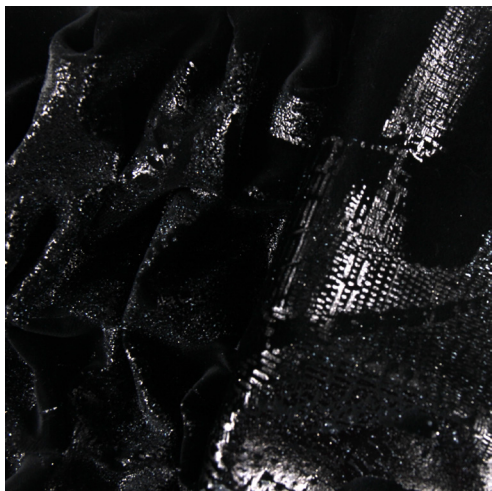
SIOBHAN JONES

siobhan.h.jones@hotmail.co.uk



Placements:

Erdem - London, Diane Von Furstenberg - New York



A collection of designs inspired by the structure of chaos: focusing on the juxtaposition of continuous movement and static architecture within New York. Combining stylized drawing techniques, a contemporary colour palette and surface manipulation to create a collection that can be applied to both fashion and interior textiles.

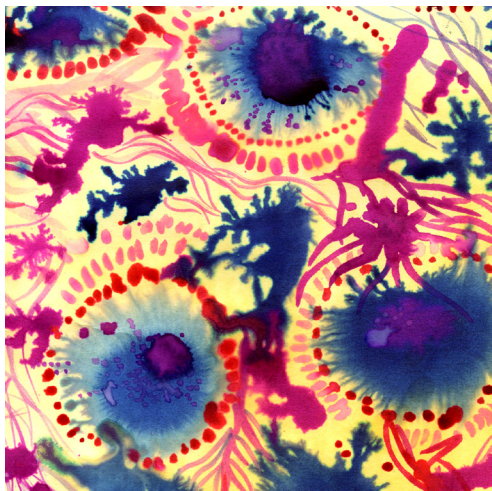


CLAIRE MARTIN

clairemartin_89@hotmail.com
07929450461

Placements:

Goldie - London



A vibrant collection inspired by the diverse natural forms and elements within the underwater and sea life world. The collection explores the rich colour and pattern to create luxurious, exotic designs. Using both digital and screen printing processes to translate and form an interior collection.



HANNAH MILES

hannah_miles_@hotmail.co.uk
www.prettytoughdesigns.com
www.prettytough0.blogspot.com



Placements:

Nicole Farhi - London, *Reiss* - London, *Ted Baker* - London, *Bolongaro Trevor* - London,
Brora - Stevenage, *Selfridges* - London



I have focused on the emotional link between flowers and the feelings they evoke, translating this through screen printing and digital design. Optimising strong shapes by accentuating colour and original line drawings, I have produced an edgy fashion collection giving a visual representation of my title “Who said romance is dead?”



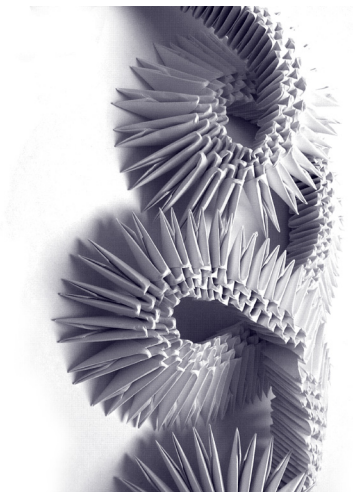
JOSEPHINE MUNSEY

josephinemunsey@gmail.com
07909 991823



Placements:

*DVF - New York, H&M - Stockholm, Matthew Williamson - London,
Zandra Rhodes - London, Keeler Gordon - London*



Inspired by paper and fabric manipulation this vibrant collection uses photography and observational drawing to challenge the eye. Combining digital and screen printing techniques gives the designs a dynamic effect. A year of diverse placements has broadened my knowledge of the industry and focused my creative development.

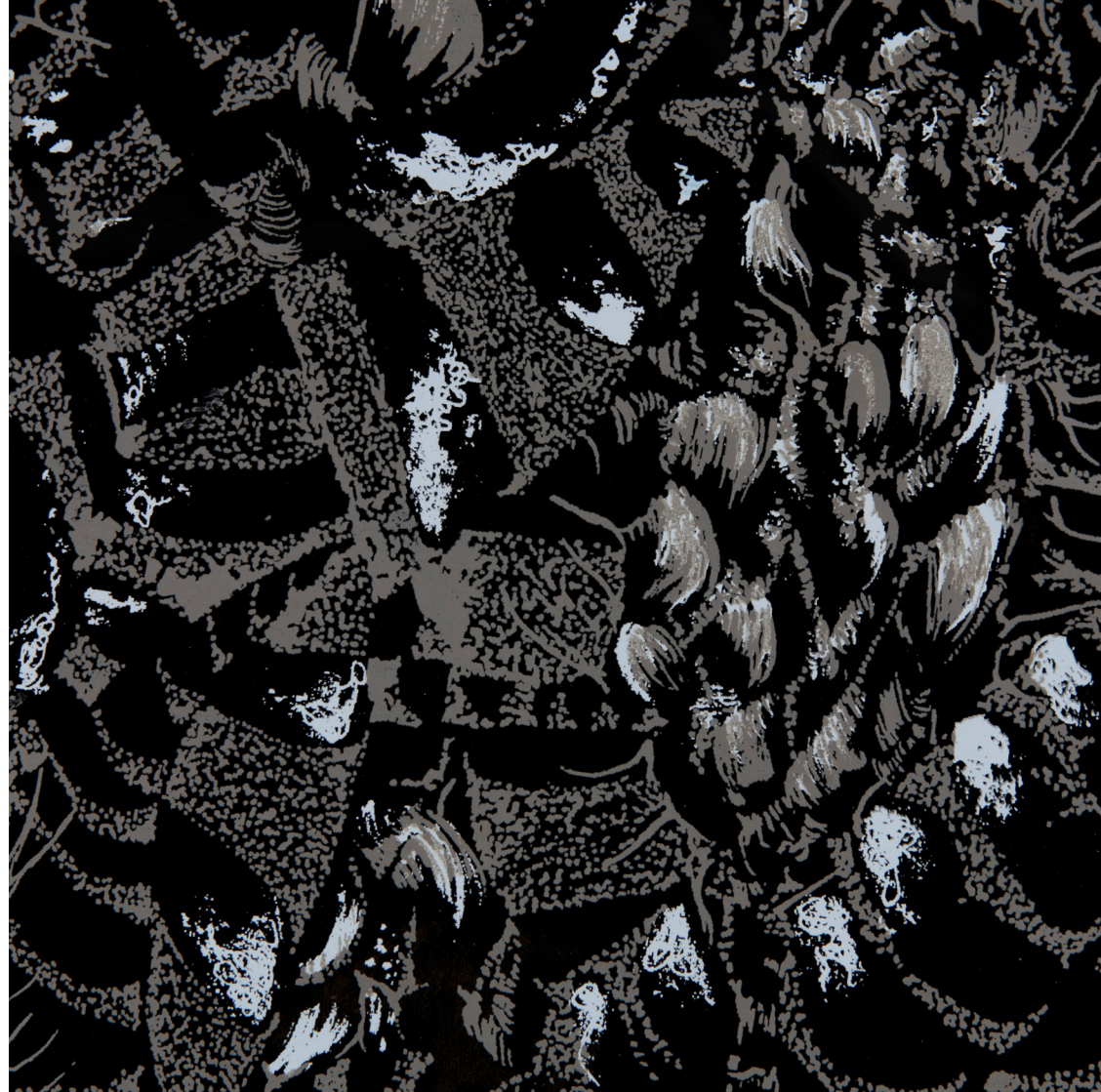


VEENA PATEL

veena1990@hotmail.com



'Fetish florals' A contemporary spring summer fashion collection, inspired by exotic botanical forms and the textures found within them. Using a vibrant colour pallet, combining the processes of screen and digital printing; alongside the exploration of surfaces such as pvc. Ultimately resulting in an exciting set of designs.



CHLOE ROBINSON

chloe13291@aol.com



I have been inspired by garden flowers, vintage and antique objects. They have been combined together by setting up still life compositions, which are then designed into motifs and patterns. The collection includes wallpaper and upholstery fabrics in a pastel colour palette.



CLAIRE SMITH

clairelsmith@yahoo.com
<http://clairelsmith.co.uk/>
07792 449776

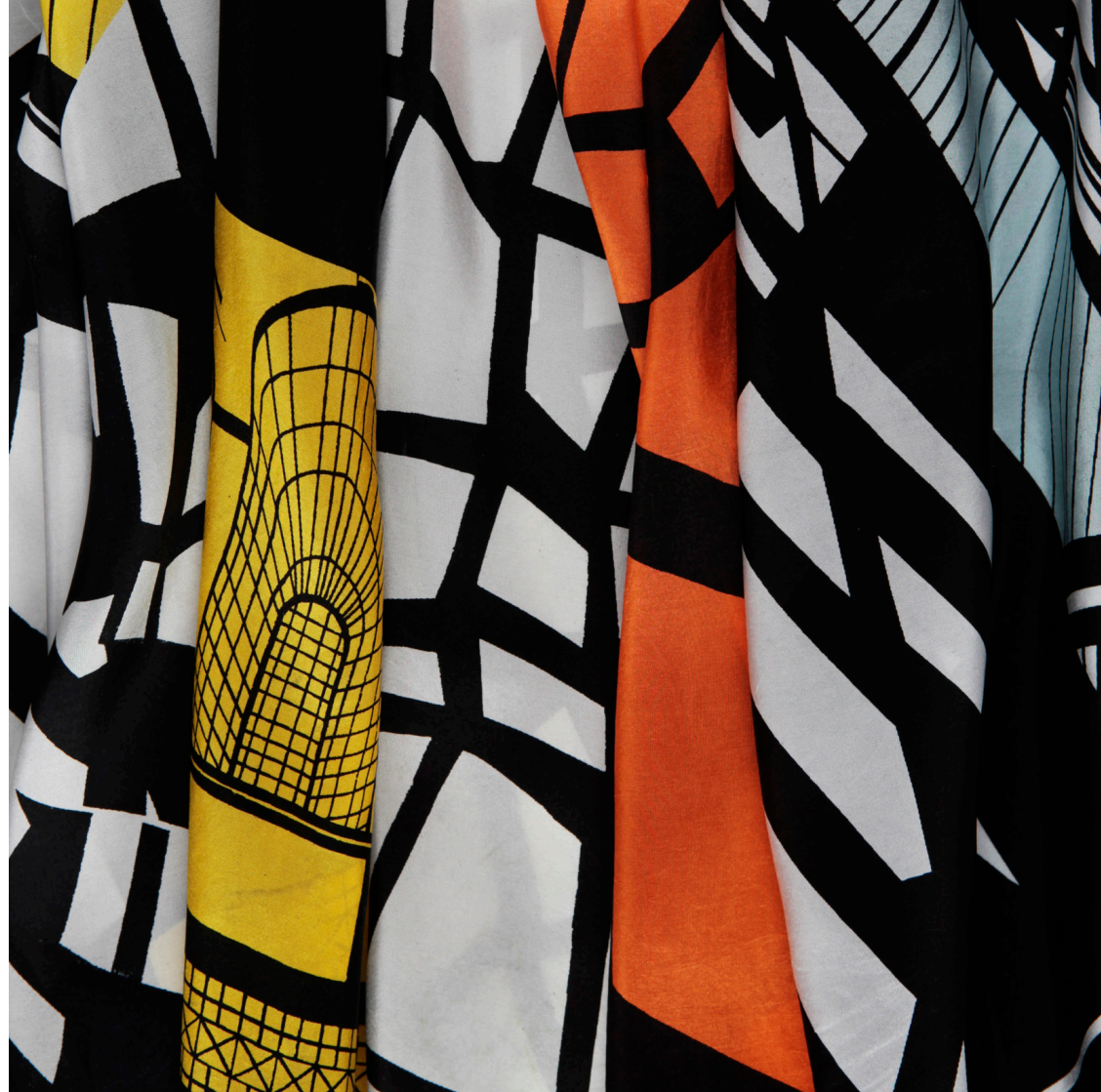


Placements:

Marks and Spencer's - London, *Amanda Kelly* - London, *Baxter Fewcett* - London, *Tatty Devine* - London, *ASOS* - London, *NEXT* - Leicester



My idea is based upon architecture, using the buildings patterns to create tribal and geometric prints, which are for contemporary fashion. For this I am using a monochrome colour palette with splashes of colour to add another dimension to the collection.



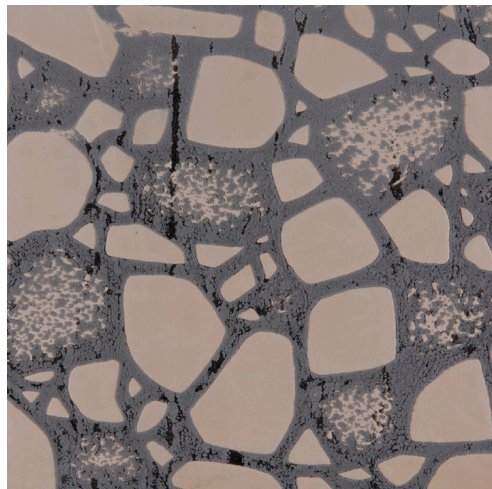
CHARLOTTE STIRLING-WHITTINGHAM

char.whit@hotmail.co.uk

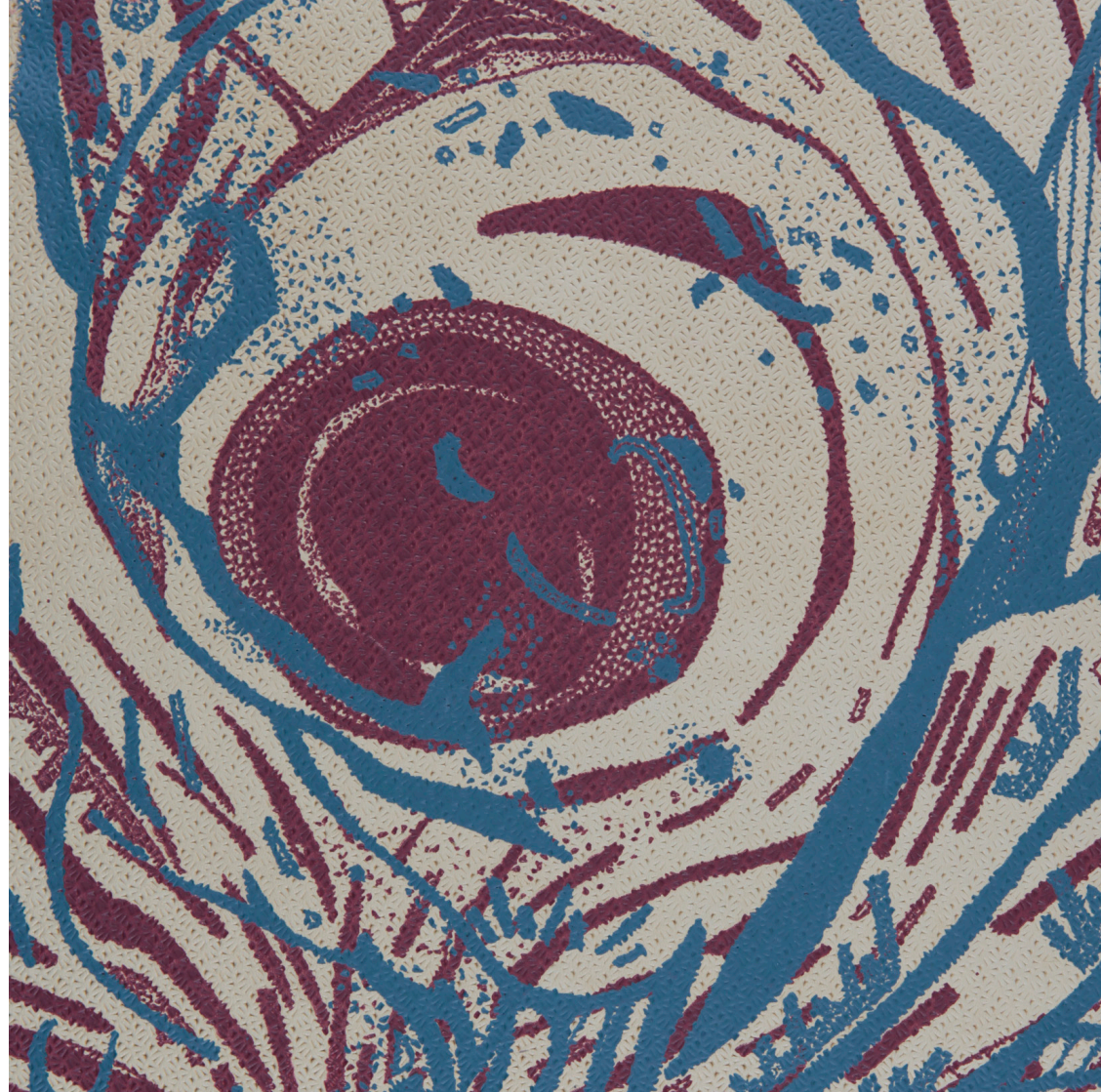


Placements:

Next Fabric Sourcing - Leicester, Next Home Design - Leicester, Marks and Spencer Peruna Design - London, George for Asda - Lutterworth



Strongly influenced by nature's own pattern and texture, the combination of detailed drawing and a contemporary colour palette offers designs intended for a commercial interior application. By experimenting with new materials and occasionally manipulating material surface, a sense of depth and detail is intended in the design work.



ANNA VANDERWALL

annav_52@hotmail.com



A collection inspired by the beauty of wild British floral and organic forms with an emphasis on fine detailed line drawings to create stylised contemporary prints intended for interior wallpapers and unique upholstered items. The use of vibrant contrasting and harmonising colours brings a sense of luxury and character to any chosen interior space.



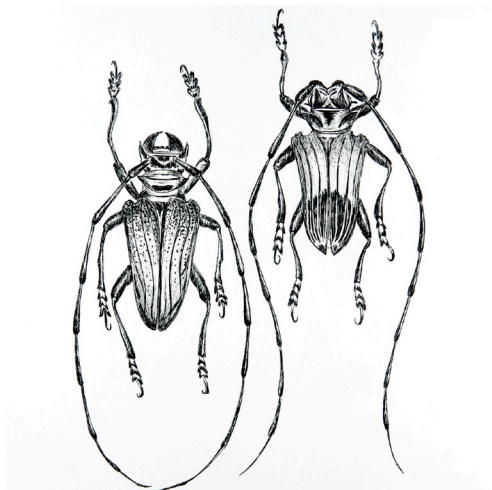
BECKY WEBBERLEY

beckywebberley@hotmail.com



Placements:

Amanda Kelly - London, ASOS - London, Lewis and Lewis Design - London, Nicole Farhi - London, Pattern Textiles - London



A Spring/Summer fashion collection inspired by the study of entomology, created using detailed drawings and vivid colours to convey the hidden beauty found within insects. The collection captures insects both figuratively and as close up compositions that take on an abstract form.

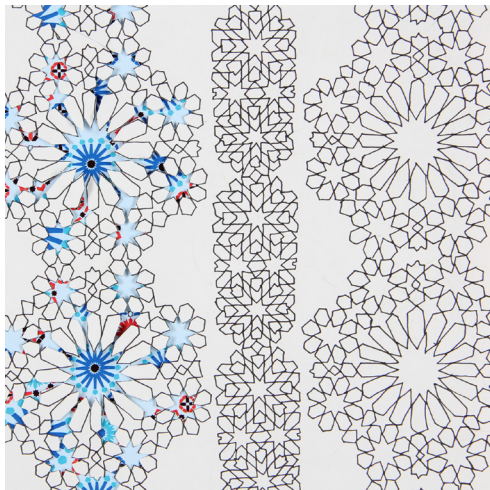


CHLOE WHALLEY

chloewhalley@hotmail.co.uk
07970 594381

Placements:

Topman (Arcadia Group) Design Team - London



A Passage to Marrakech

My work was inspired by my visit to Marakesh. I have developed different processes such as engineered pleats and laser cuts within my prints. I have also used a variety of different printing techniques and CAD skills. My prints have been designed for spring/summer high end fashion.



CHARLOTTE WILLS

charlotte.wills@hotmail.co.uk
07706 511172



Placements:

Cherrybody Fashions - Quorn, Whiston & Wright - London, Whistles HQ - London



Inspired by my favourite seaside locations along the North Coast of Cornwall this swimwear fashion collection strongly reflects my passion for sportswear design. My narrative compositions are created in delicate and feminine pastel shades to portray the picturesque Cornish scenes and provide an innovative take on sportswear.





WEAVE

The weave programme at Loughborough enjoys a high profile and excellent track record within the field. This year's graduates enhance this portfolio, exhibiting collections which show outstanding quality and diversity.

The students display a unique combination of skills through an innovative approach to woven structure and experimental use of materials and equipment. Their design development is thorough and underpinned by quality drawing and contextual research, which explores their own individual creative focus. They are displaying a beautiful and sophisticated range of woven conclusions, covering a breadth of applications for fashion and interiors.

The versatility of their skills is evident and has been enhanced by continued exposure to external requirements. Some have spent time working in the industry on short term placements, whilst others chose the option of taking the Diploma in Professional Studies, spending a year in industry, at companies in the UK, USA, Europe.

All of this year's students have produced work and won many prizes for major competitions, such as the Bradford Textile Society and the Society of Dyers and Colourists. They have also taken part in live projects, with companies such as Abercrombie and Fitch, which has led to the employment of several students upon their graduation. Many student's individual weave collections have also been exhibited at the international design trade fair 'Indigo' in Paris.

The weavers graduating this year are well equipped to face the challenge of the increasing demands made upon them by the industry, and whatever the destination, their skills are highly prized and sought after.

Jan Bowman and Jan Shenton

Weave Pathway Leaders

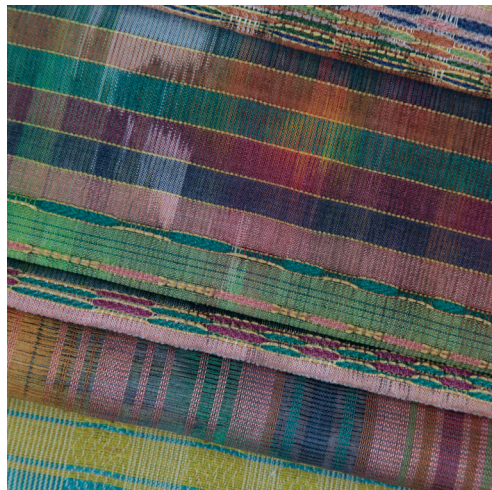
JAYMINI BEDIA

jaymini@pukkakids.com



Placements:

Gainsborough Silk Weaving Company - Sudbury



A diverse collection of woven textiles for interiors inspired by the machinery of a functioning silk weaving mill. The collection embodies my passion for colour and texture and is centred around the idea of luxury. The fabrics embrace traditional design values but with a contemporary twist.



HANNA BOWEN

bowenbee@gmail.com

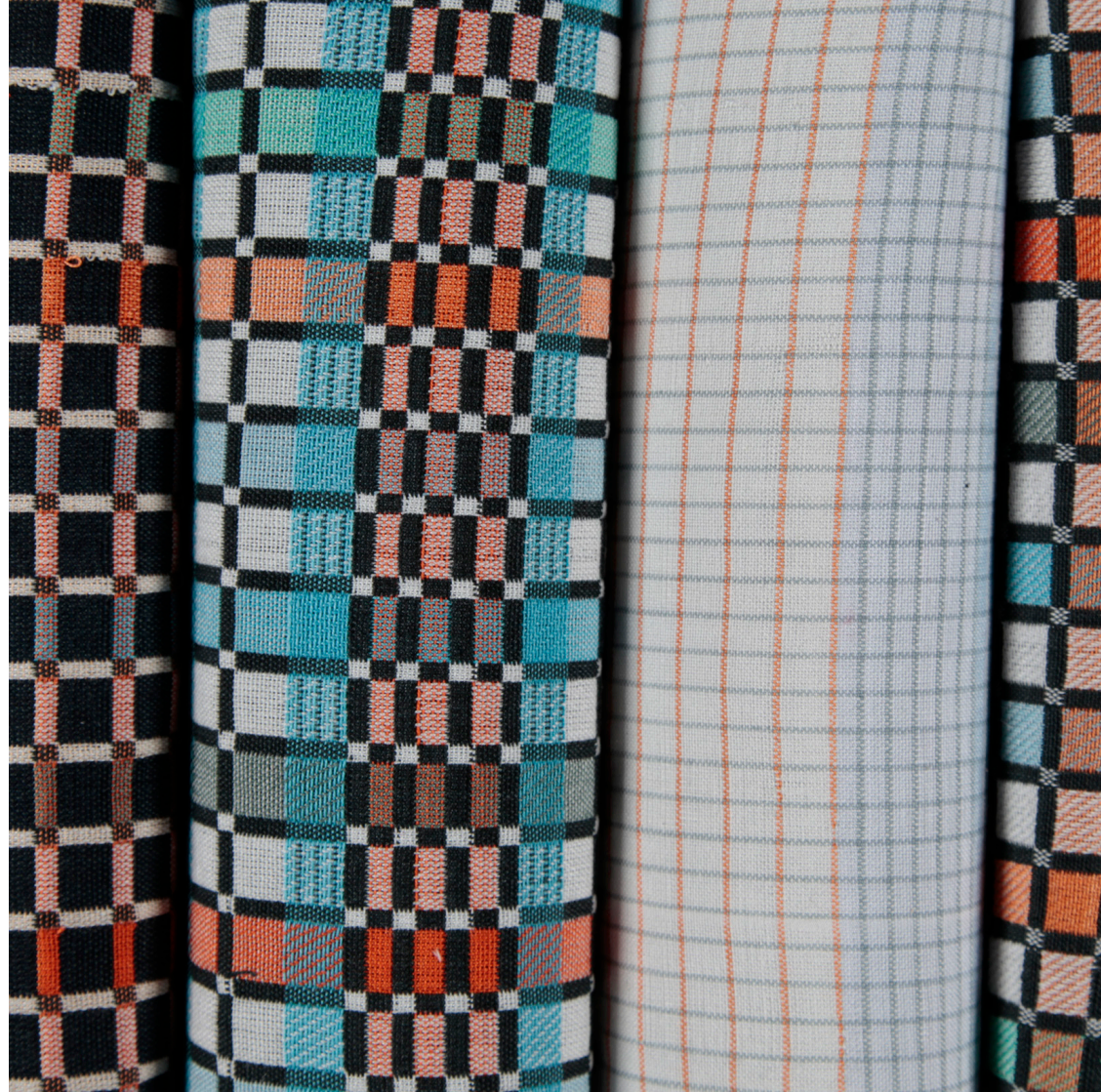


Placements:

Alpkit - Derbyshire, *Dunelm Mill* - Leicestershire, *Harlequin Fabric and Wallcoverings* - Loughborough, *Karolina York Print Studio* - Sydney



The modern architecture of Sydney and London has inspired my lively, graphic designs. Focusing on the relationship between colour and pattern as well as geometric juxtaposition, I have created an energetic collection of fabrics for contemporary interiors.



EMMA BURT

burtiee@live.co.uk



Prizes:

Commendation Award from The Bradford Textiles Society

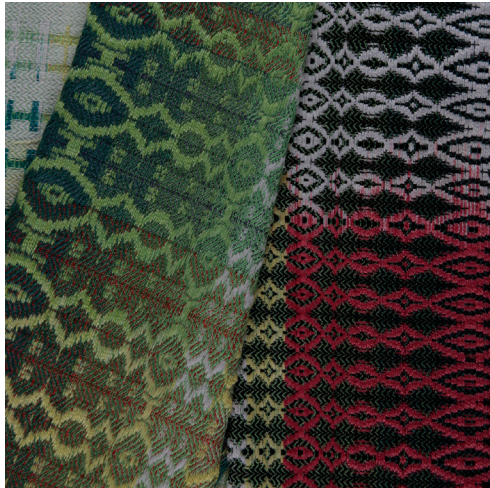


The range in colour and intrinsic details found in underwater life inspires this distinctive collection. Exploring intense hues, intricate structures and subtle surface textures, these dip dyed silk pieces are intended for high end fashion.

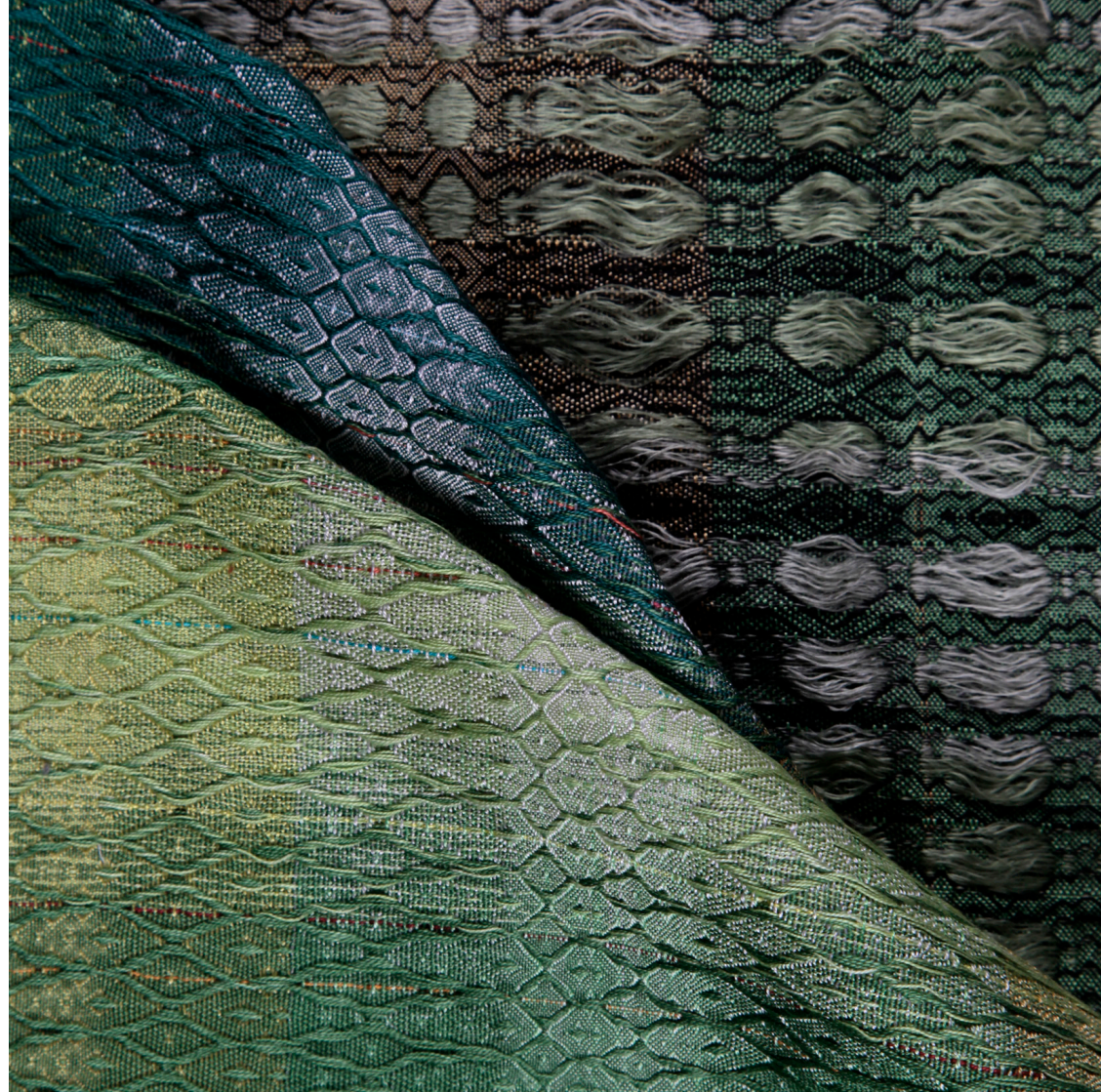


ABIGAIL M. COOPER

abigailmaycooper@hotmail.co.uk



Derived from colour changing reptiles this exploratory collection of woven fabrics display complimentary colours, continuous pattern and extraordinary surface qualities fit for the male fashion industry.



JENNY CRADDOCK

jennycraddock@hotmail.co.uk
<http://jenny-craddock.blogspot.co.uk/>



Prizes:

Special commendation award for woven womens wear - cloth workers foundation award, Bradford Textiles.



Drawing inspiration from a range of beautiful antique keepsakes, I have combined my fascination with quirky, forgotten aspects of our past with contemporary design. Using soft colours, delicate pattern and surface detail, the collection evokes a sense of luxury and pure beauty.



CONNIE CULLIFORD

constance.culliford@googlemail.com



Inspired by familiar ornaments and decorations around the home, I have captured colours and patterns from these groups of quirky objects and translated them into an exciting and sophisticated collection of woven fabrics for interiors.



SARAH DEAMER

sarahdeamer@hotmail.com
07881 792701



Placements:

Selfridges (visual merchandising) - London, Tom Cody Design Studio - London, Margo Selby Woven Design Studio - London, Wallace Sewell Woven Design Studio - London



A bold and vibrant collection of woven fabrics for interiors. The countryside, agriculture and tulip farming have inspired the surface pattern and colour of these luxurious and innovative weaves. The collection demonstrates my passion for experimenting with exciting colour combinations using fine silks and cottons.

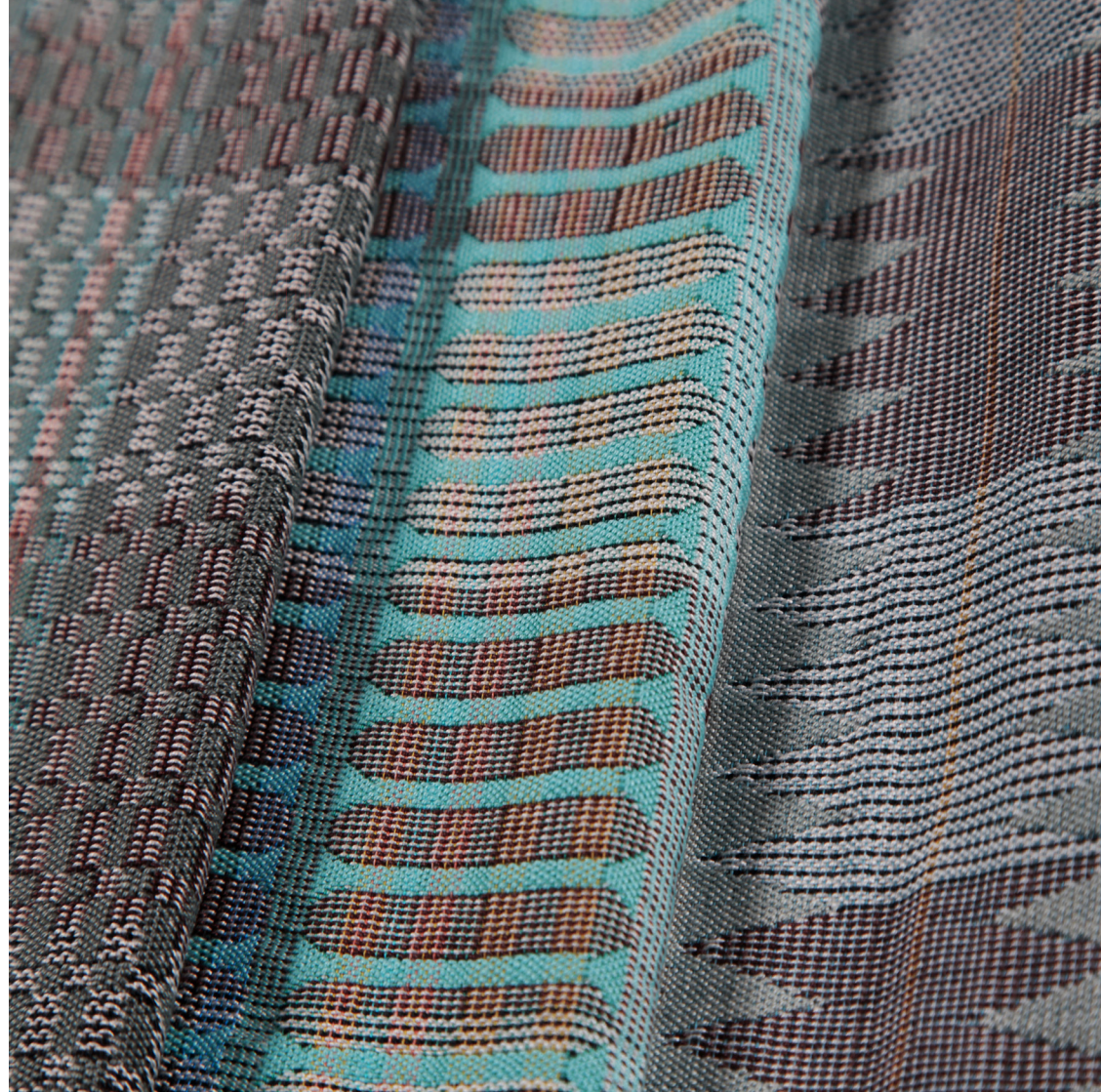


LISA DEVONSHIRE

lisa.devonshire1990@hotmail.co.uk



A sophisticated collection of woven designs inspired by the huge variety of shapes found on architecture when closely inspected. The combination of detailed pattern, dynamic colour and line has been explored, to create eye catching and intricate large and small scale pieces. These fabrics are perfect for contemporary interior use.



KETSARIN GOODWIN

ketsaringoodwin@hotmail.co.uk



Prizes:

Commendation Award from The Bradford Textile Society



Exotic flowers and plants housed at Kew Gardens are the inspiration behind my collection intended for interiors. The natural shapes found are translated into a collection that explores exciting compositions, interesting surface qualities and vibrant colour.



CHARLIE HARRIS

charlieharris_22@hotmail.com



Taking inspiration from the structure of butterflies and the vibrant colours of flowers, I have created a bespoke collection of weaves for interiors. A variety of silks and wool, which have been hand dyed, capture the texture and patterns of a butterfly's wing.



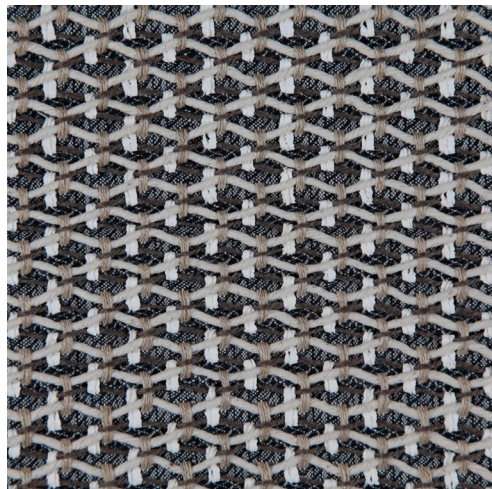
KIRBY HARRIS

xxohlaxx@hotmail.co.uk

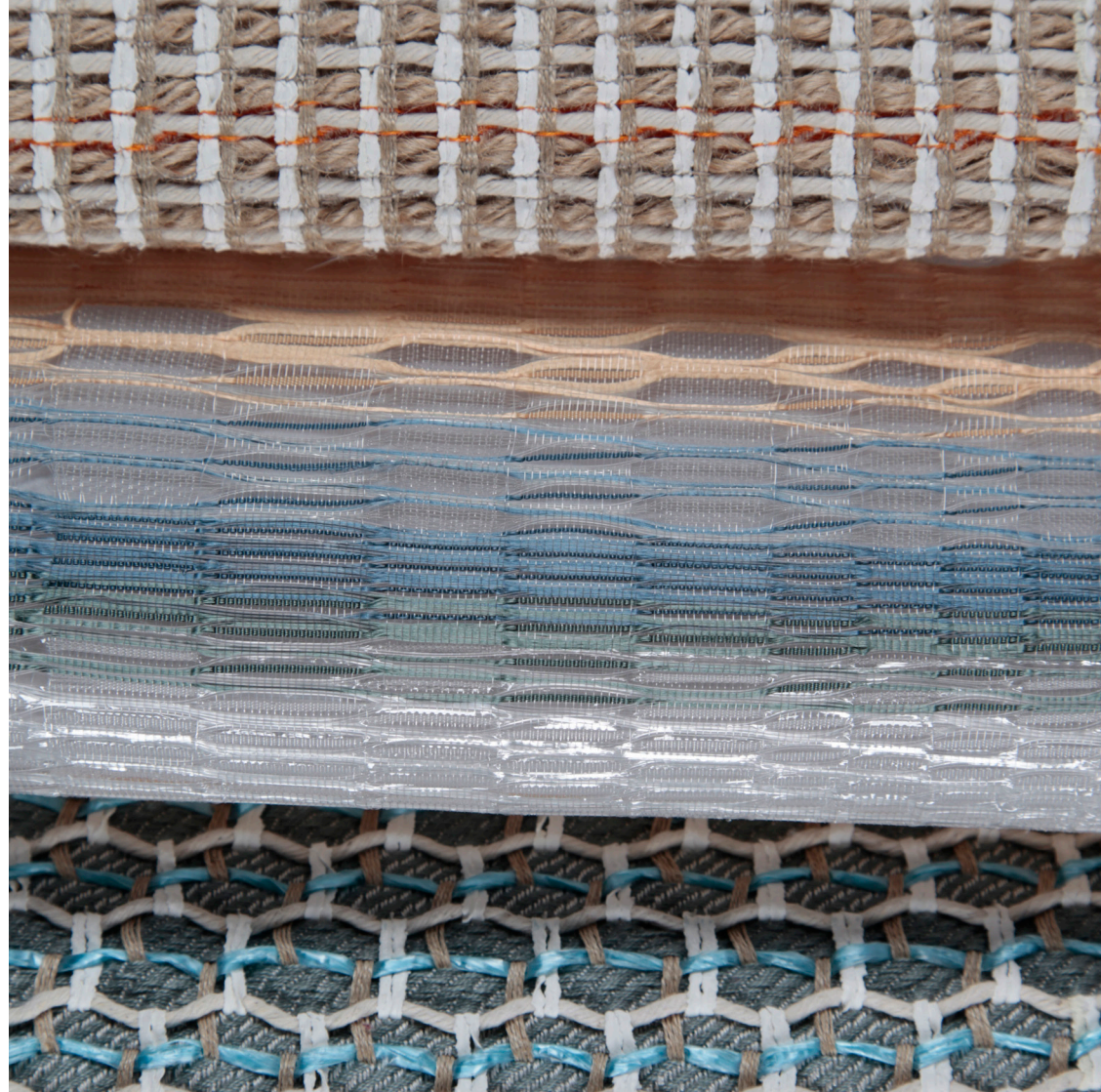


Placements:

Fenwick - Canterbury



An original collection of fabrics inspired by fishing nets. Incorporating a mixture of fishing line and strings alongside other thick yarns to create texture, this collection is intended for high-end interiors and would look great on carpets held within an environment inspired by the original inspirations.



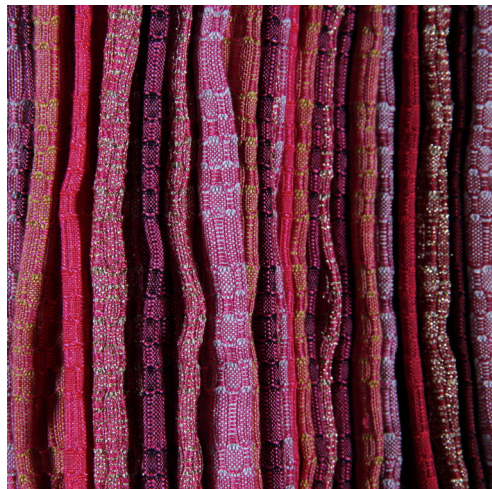
ELLIE LOUISE HAWKINS

ellielouisehawkins@gmail.com



Placements:

Larch Rose - Brighton, Margo Selby - London



An exciting collection of woven silk fabrics for fashion, inspired by Kew Gardens and The Brighton Pavilion. Their bright and vivid colours contrast with black and white stripes creating a range of vibrant and innovative woven pieces.



CHARLOTTE HOAD

charlottehead@hotmail.com



Placements:

Fenwick - Canterbury



An exclusive collection of woven textiles, inspired by the natural occurring organisms and patterns of fungi. Incorporating a variety of different elastics and cotton yarns to produce three-dimensional, textured fabrics; intended for contemporary, fashion garments.



ELIZABETH HUDSON

elizabethcarolehudson@gmail.com
07891 872819

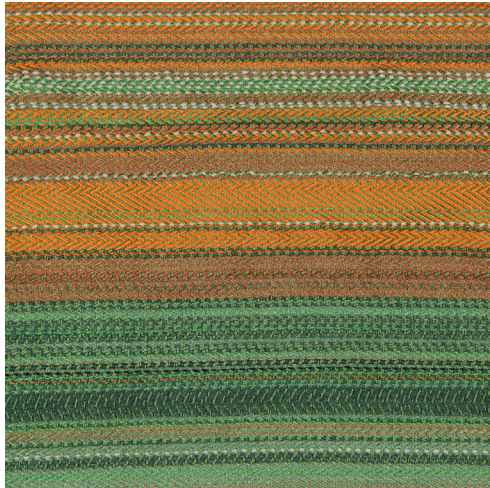


Inspired by Venice, this simple yet energetic collection has been motivated by the city's beautiful canals, architecture and life. Colour plays a huge part within all of my work, as well as line and composition.



DALIA JAMES

dalia_james@yahoo.co.uk



The juxtaposition of organic and man-made structures found within the markets of east and south London has been the focal point that has informed this collection. The combination of contrasting colours, textures and structures has created a unique and vibrant collection of menswear fabrics.



CHELSEY JANE JONES

cjane2010@hotmail.co.uk



Prizes:

Scholarship - The Worshipful Company of Weavers
Commendation - Bradford Textiles Society



The eroding industrial architecture of the pottery industry in Stoke-On-Trent has inspired me to create a range of woven fabrics designed for luxurious furnishings. From my photographs of the area, using colour, texture and pattern I have demonstrated an interesting, alternative collection, experimenting with layers, weights and structures.



SARAH LYNN

sarahelynn1@gmail.com
sarahelizabethlynn.tumblr.com



Placements:

Tom Cody Design Studio - London and New York, *Melin Tregwynt Woollen Mill* - Pembrokeshire, *Wallace Sewell Woven Design Studio* - London



The repetitive patterns of geometric tiled floors in Florence and Venice have inspired this collection of woven designs. The use of contrasting colour, shape and scale have created beautiful patterned fabric for interior furnishings.

Sponsored by Melin Tregwynt Woollen Mill



ALEXANDRA MEAD

alexandramead@hotmail.co.uk



Placements:

Tatty Devine - London, *ASOS* - London, *Paolita* - London, *Monsoon* - London, *Handmade Interiors* - London



My work is strongly inspired by butterfly & bird structure and colouring. This theme has been chosen because of the beautiful details and hues of these creatures, which is something I wish to emulate and reflect in my woven pieces.



ALICE POINTON

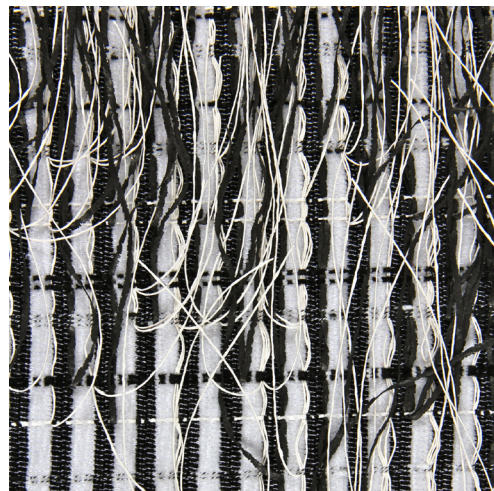
alicepointon@gmail.com
<http://alicepointon.tumblr.com/>

Prizes:

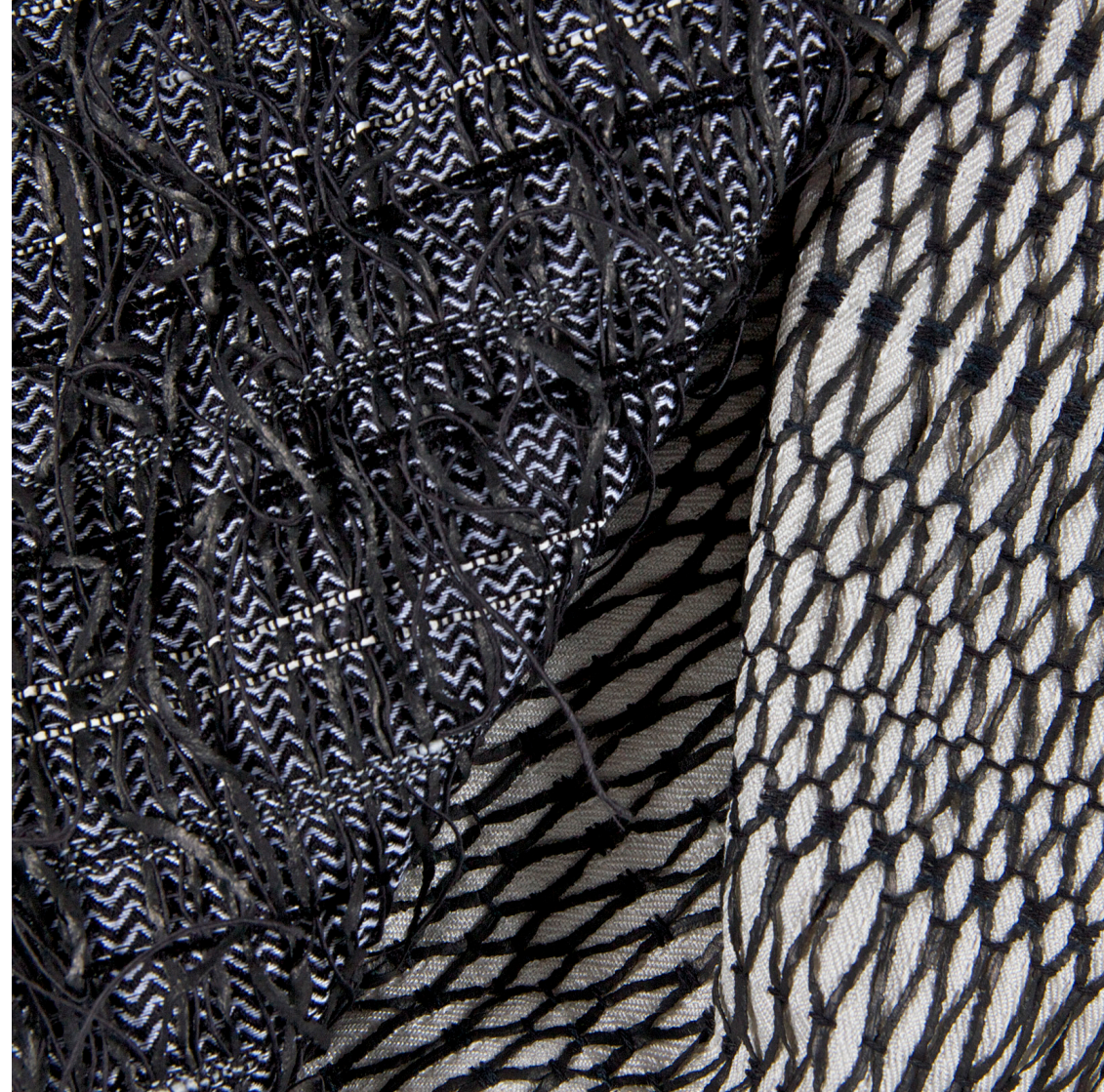
Scholarship winner 2012 - Worshipful Company of Weavers

Placements:

Tom Cody - London, *Tom Cody* - New York, *Margo Selby* - London, *Boden* - London

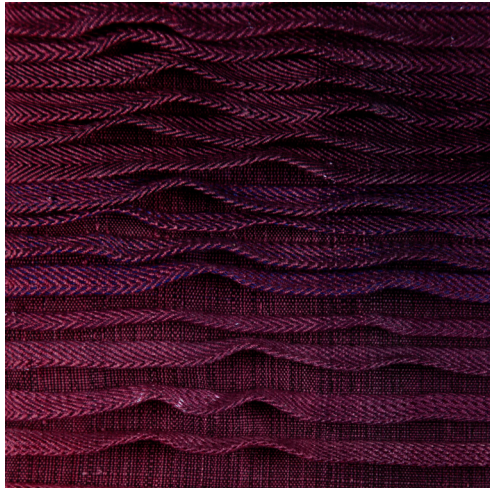


A collection of textural weaves sit alongside laser etched designs inspired by electrical overheads and architectural shapes, focusing on the qualities and movement of yarn. The use of a monochrome colour palette with metallic accents creates a distinctive and exciting collection designed for fashion.



ELLEN SIMPSON

ellson7@hotmail.co.uk



This collection takes woven fabrics into 3-D wall structures for interiors. Using silk, polyester and wires and looking at the shadowing qualities of the materials, simple twills and distortions will concentrate on colour transitions from deep purples through to shades of orange, reflecting the movement of colour found within fish scales.



HOLLY LIAN WILEMAN

hlw_wildthing@hotmail.com
07773 276944



Inspired by tropical birds and tropical surroundings, colour and structure is key to my collection, producing a playful range of woven designs intended for fashion. My designs express my love and passion for vibrant colour alongside my careful consideration to structure creating my playful bird shaped patterns.





MULTI-MEDIA

The Multi-Media Textile programme at Loughborough is widely known for its innovation and individual approaches to the creation of textiles in the realms of design and art. Our graduates explore individual concepts and develop them through making, questioning and challenging the traditional notions and boundaries of textile practice and application for the future.

The 2012 students have a strong desire to make an impact within the textile industry and the broader art and design context. There is variety and diversity in the group, with work ranging from small-scale design pieces to large textile-art conclusions, all pushing the parameters of manufacturer and materials even further.

Each student is encouraged to be creative and individual, and to make exciting concept-driven work. This approach is reflected in their portfolios by in-depth research and design development in the form of drawing and material experimentation. This leads to unique and innovative ideas for application within fashion, interior and fine art contexts.

Students have the opportunity to enter national and international competitions. They also participate annually in the international fashion fabric trade fair 'Indigo' in Paris,

where MMT undergraduates have an impressive record of selling designs and making contacts for the future. Past clients have included Salvatore Ferragamo, Louis Vuitton, Prada, DKNY, Diane von Furstenberg, Calvin Klein and many others.

Career choices for MMT graduates are endless. Graduates gain employment in a wide variety of areas or continue to postgraduate education. Last year a number of graduates were employed in textile manufacturing and design studios both in the UK and USA while many others were accepted to specialist MA courses. This year one graduate has already won a place on the Costume for Theatre, Television and Film course at the prestigious Bristol Old Vic Theatre School. Many other successful stories of the present graduates will surely come soon.

MMT graduates leave Loughborough with a strong individual collection of work, the conviction to stand out from the crowd and the work ethic to make things happen.

Nithikul Nimkulrat
Multi-Media Pathway Leader

LAURA CAMPION

L.Campion@hotmail.co.uk
lauracampion.tumblr.com
07849 108956



Placements:

Kate Usher - Gateshead, Longina Phillips Designs - Sydney, Karolina York - Sydney



Inspired by medicinal flora and fauna, this collection aims to explore the rich and diverse elements of the natural world whilst embracing the intricacies of nature. Experimental media allows modest infusions of colour to breathe through the piece transforming dark organic tension attempting to connect to the viewer on both a physical and psychological level.



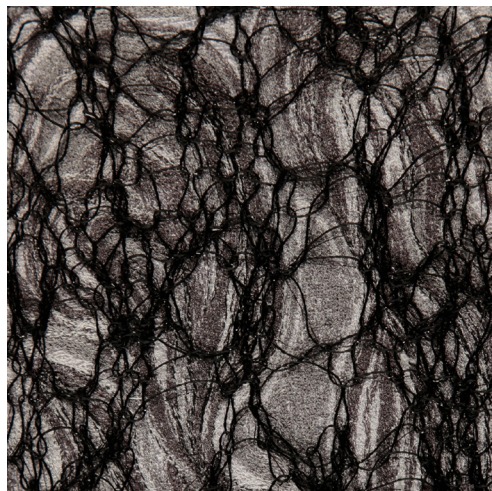
LYNDA CRAM

lyndacram@yahoo.co.uk



Prizes:

Commendation in The Bradford Textile Society Design Competition 2011



My work is inspired by organic repetition and contrast; the way nature repeats patterns, structures and textures at different scales. I am excited by the process of creating new surfaces from scratch, developing layered, dimensional pieces that resonate with natural growth patterns.



SHARON DRURY

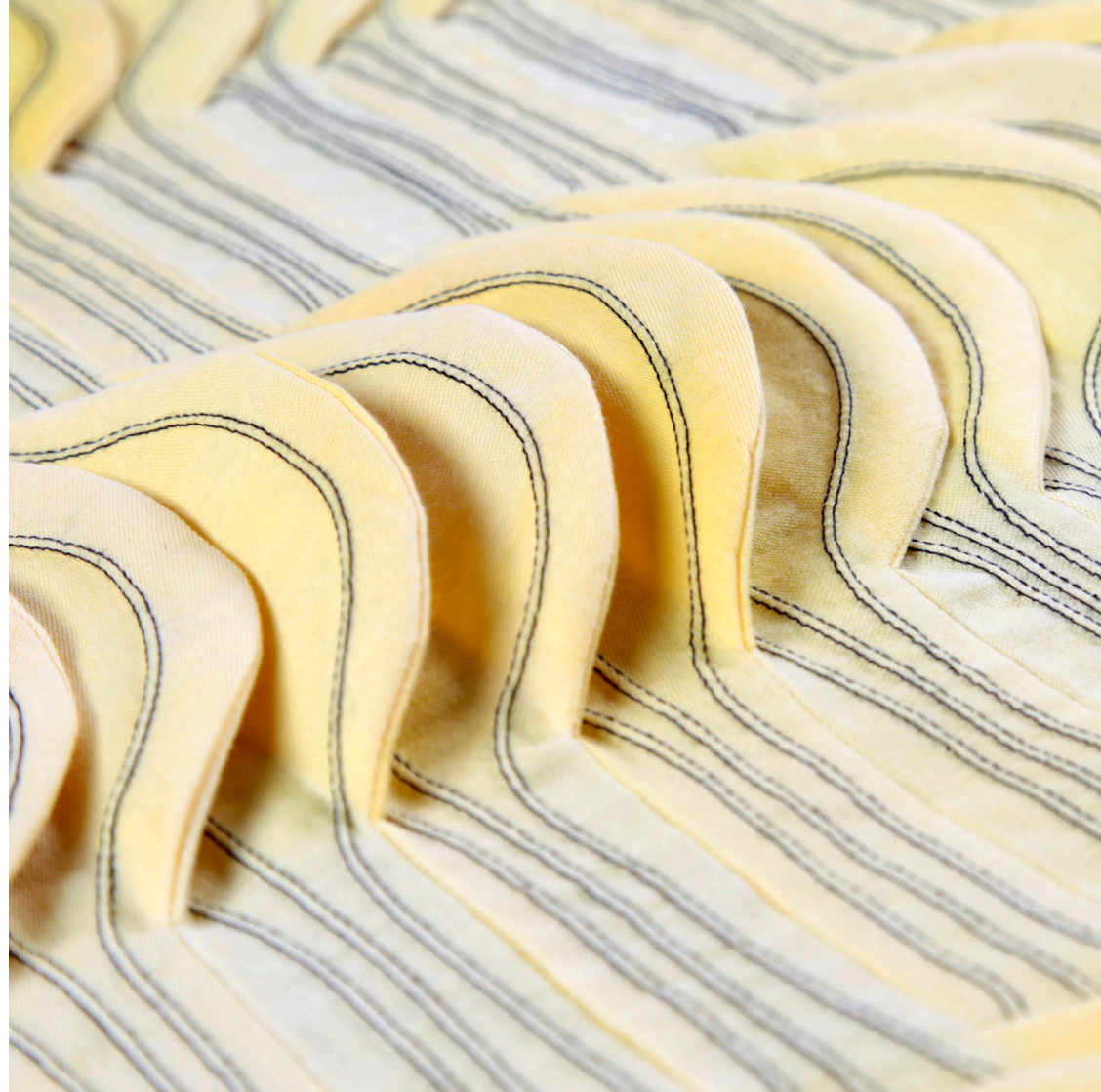
sharon@sharondrury.co.uk
www.sharondrury.co.uk
<http://sharondrury.wordpress.com>
<http://sharondrury.tumblr.com>

Placements:

Alexander McQueen - London, *Liz Black* - London

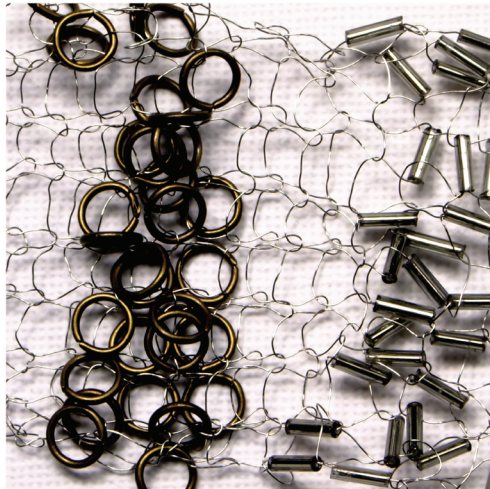


Working towards a natural and sustainable project in light of eco friendliness. My final project is inspired by repetition in nature and will be projected in my final piece as a 3D sculpture. Natural materials and organic lines are vital for my project.



JAZZMIN ENSOR

jazzminensor@hotmail.co.uk
<http://jazzminensor.tumblr.com/>
07983 541508



Exploring the changing form and shape of a snake after the feeding process, through the use of hand and machine knit. Using a combination of metallic threads, wire, and beading techniques to produce sustainable, tactile surfaces, which once applied to the body can create sculptural 3d accessories.



GEMMA FERNANDES

gemma@gemmafernandes.com
www.gemmafernandes.com



Placements:

Anne Kyyro Quinn - London, *Matthew Williamson* - London, *Philip Treacy* - London, *Evans Head Office* - London, *Nitin Goyal* - London



Intrigued by the convergence of fragility with rigidity my concept explores skeletal structures and their purpose as a supportive framework for the more unstable fabrics of the body. This has translated into hand-crafted structured platforms that both control and manipulate the fabricated surface, creating fluid sculptural formations.



JESSICA GUSSIN

jessica@thegussins.co.uk



Placements:

Philip Treacy - London, Jenny King Embroidery - Brighton



A personal collection exploring the emotion behind my memories through photographs. Playing with colour and texture is essential to my work as it portrays the emotional presence. My fabrics combine dyeing, digital printing and various forms of hand and machine embroidery to create intricate, quirky textiles for fashion application.



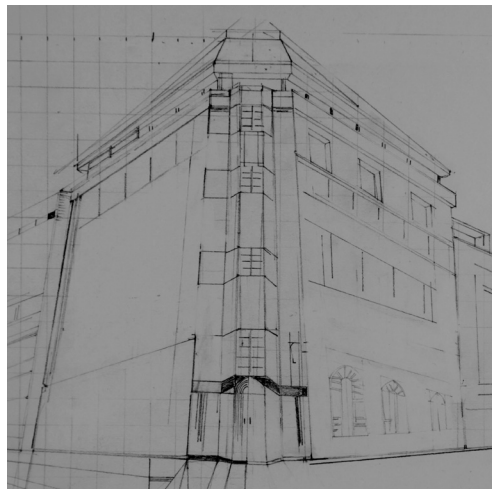
LUKE HARRISON

l.a.harrison08@gmail.com

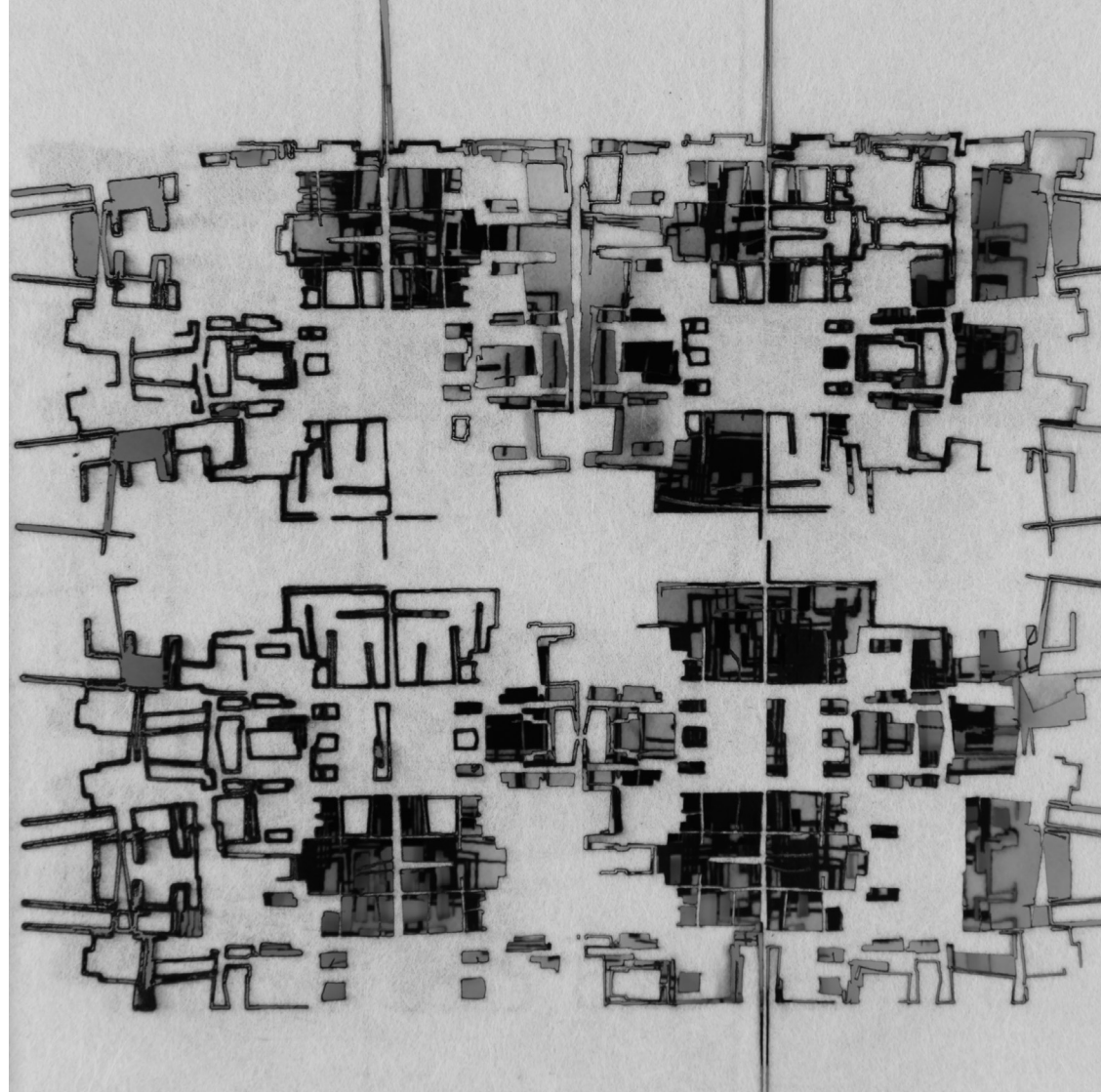


Placements:

Philip Treacy - London, *J Smith esquire* - London, *Louis Mariette* - London,
Will Skeet - London, *Kula Tsurdiu* - Nottingham

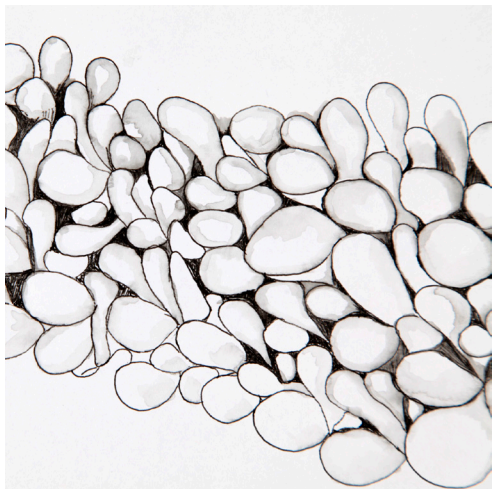


Conurbations and metropolises - strange urban land's of geometric heights, petrified desert of grids and lattices, developing, transforming and expanding as populations swell. New towns emerge overnight, bringing new, diverse and exciting architecture. Towns engulfed by cities, villages engulfed by towns. Flourishing and thriving.



STACEY HEBDITCH

staceyhebditch89@gmail.com
www.tumblr.com/blog/staceyhebditch



A tactile collection exploring the coral reef and its inhabitants. Three dimensional pieces combine both traditional and non-traditional materials to create a superstructure, exploring the diversity and behaviour of the underwater world. This is reinforced through the variety of scale and the contrasting of interactional material textures.

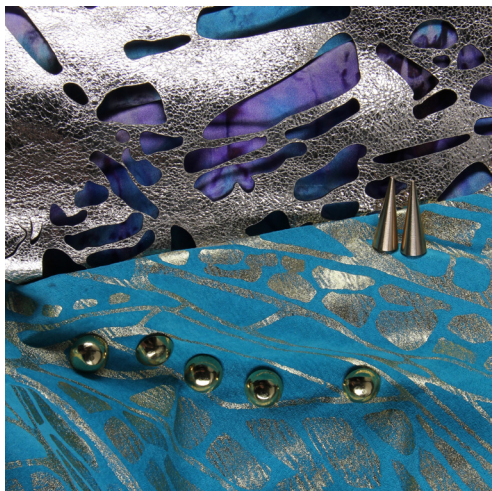


SOPHIE HURLEY

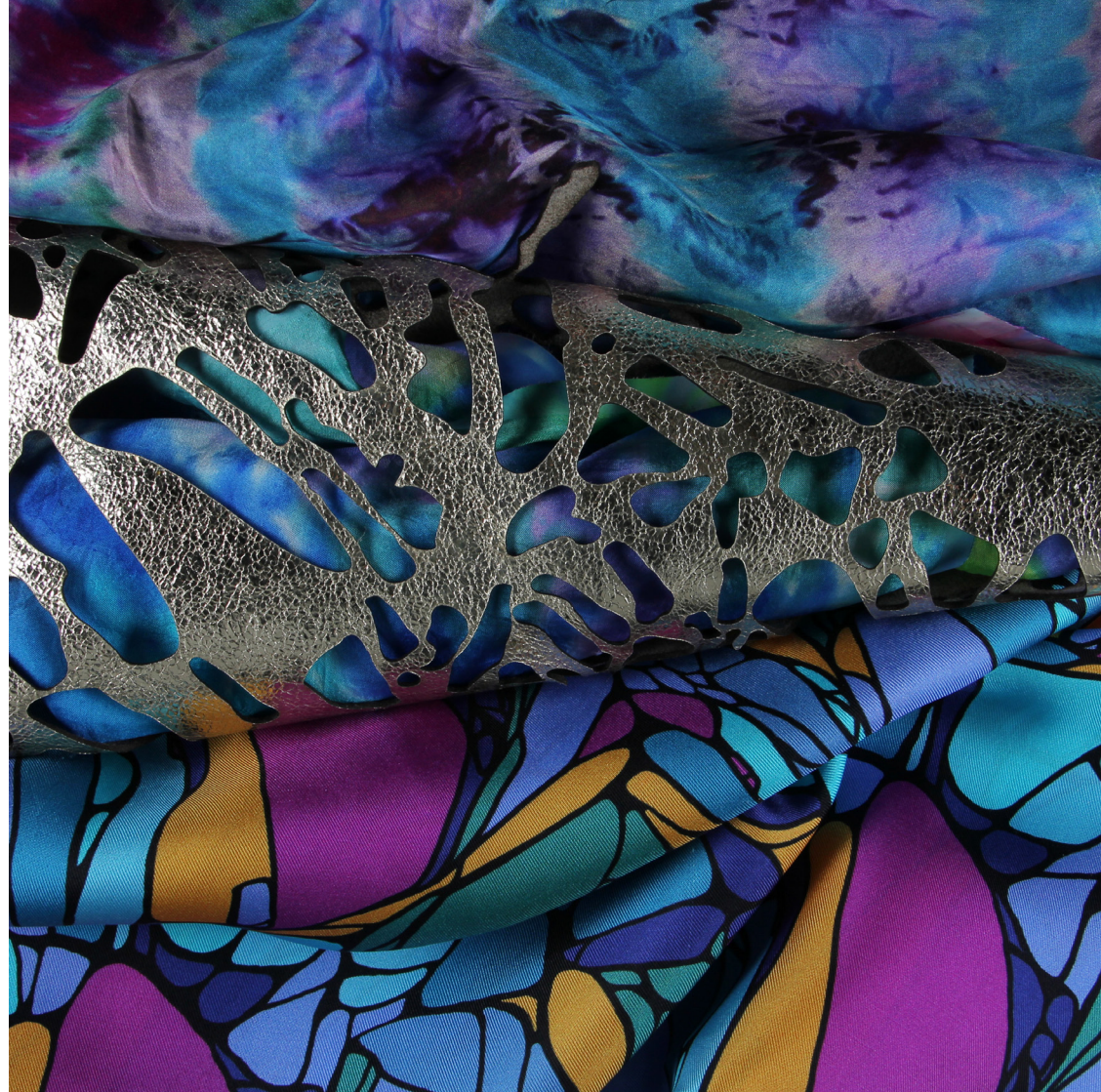
sophie_hurley@hotmail.co.uk
www.sophiehurley.com

Employment:

Erdem - London



Inspired by the chrysalises of butterflies and their armour-like qualities, this is an unconventional collection for fashion using an intriguing combination of materials. Metal, leathers and silks are printed, laser cut and embellished forming protective cocoons for the body.



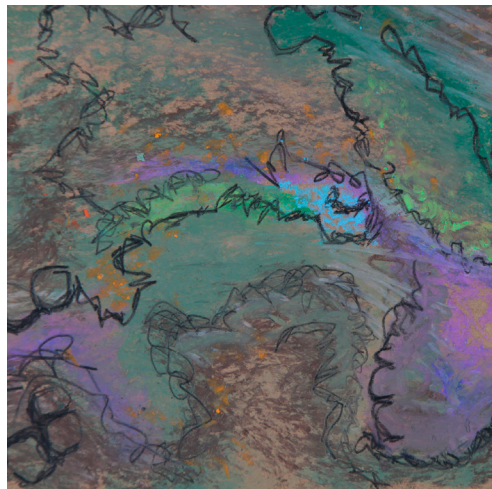
REBEKAH NEVILLE

Rebekah@RebekahNeville.co.uk
www.rebekahneville.co.uk

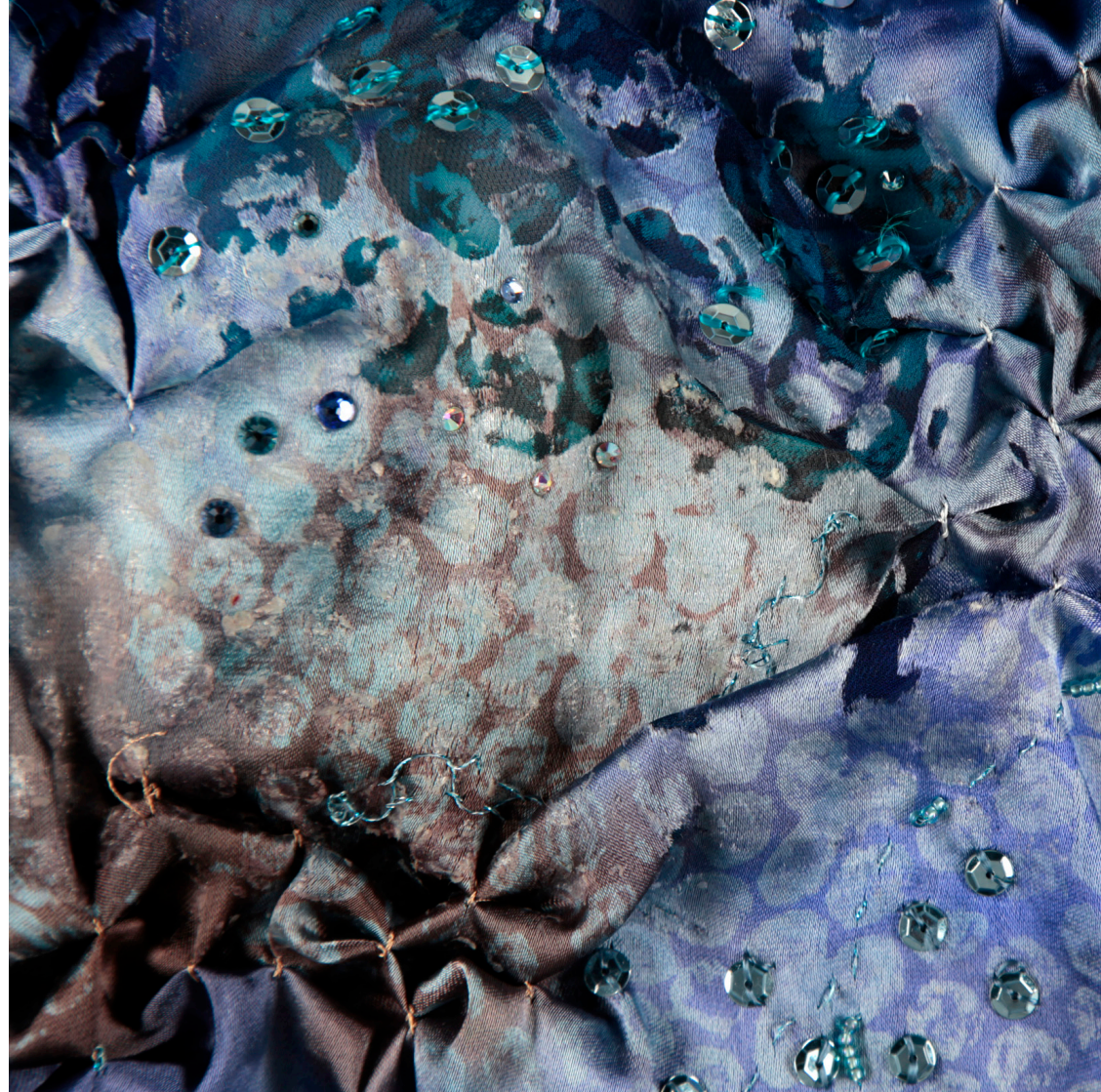


Placements:

Jane Bowler - London



Through the use of hand embroidery, fabric manipulation and surface embellishment, I have created a luxurious collection of glamorous samples, inspired by rocks and minerals.



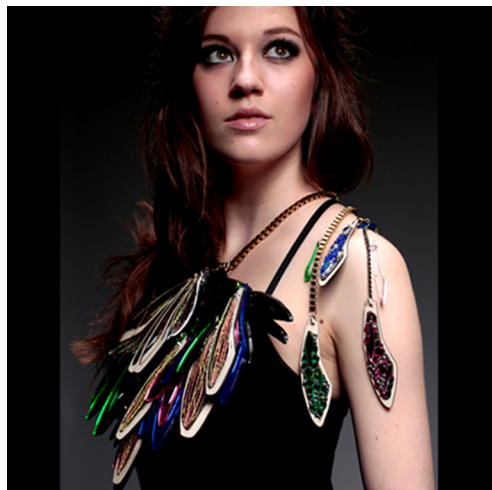
ANISHA PARMAR

ani_1234@hotmail.com
www.apcouture.co.uk
<http://anishaparmar.tumblr.com/>



Placements:

Tatty Devine - London, Blow PR - London, British Fashion Council (London Fashion Week) - London, Jayroma and Wendell Rodricks Design Space - London



My work is jewellery and accessory design base where material experimentation in the form of metal, glass and wood has been integral. The style of my work is highlighted by the combination of textures, use of colour and flamboyant design aesthetics.



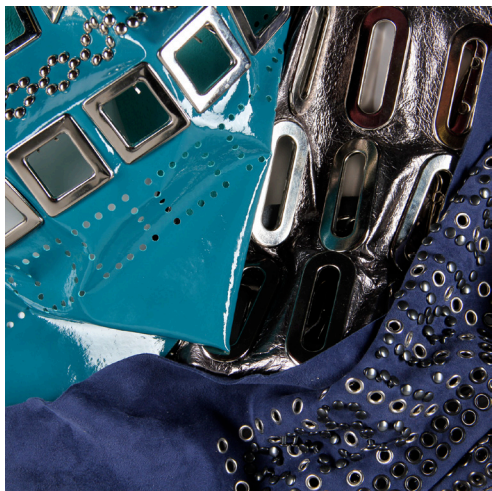
JENNY PURCHASE

jennypurchase@gmail.com
www.jennypurchase.co.uk
<http://jennyp10514.tumblr.com/>

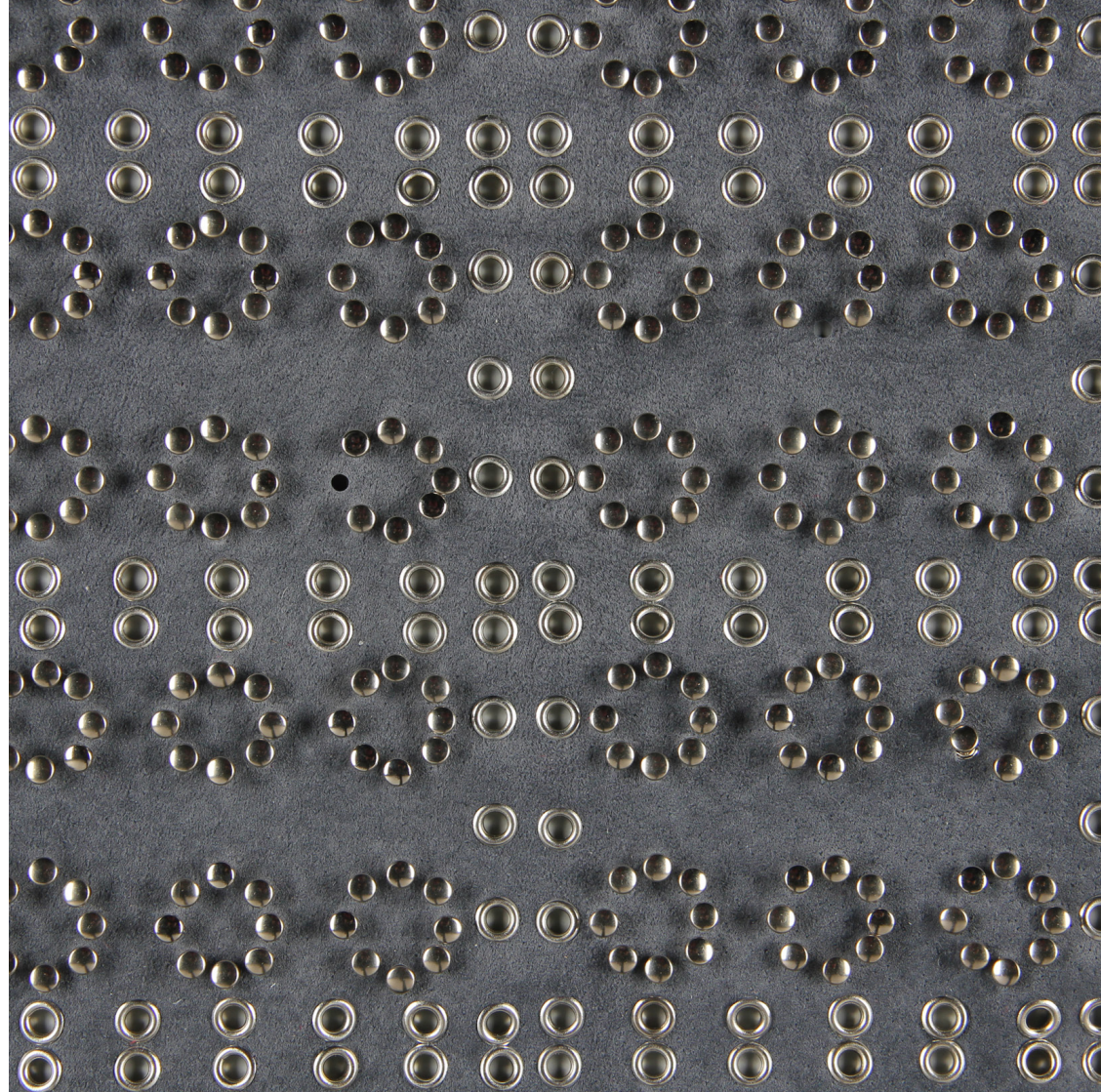


Placements:

Holly Fulton - London, Tatty Devine - London, Philip Treacy - London



Up Above and Down Below:
A collection of 2D pieces
portraying a battle between fluid
and geometric pattern, repetition
and hard versus soft surfaces,
bringing the floor and ceiling
to eye level. Using laser cutting,
etching, eyeleting, and riveting
on suede and silk, my designs are
aimed towards fashion.



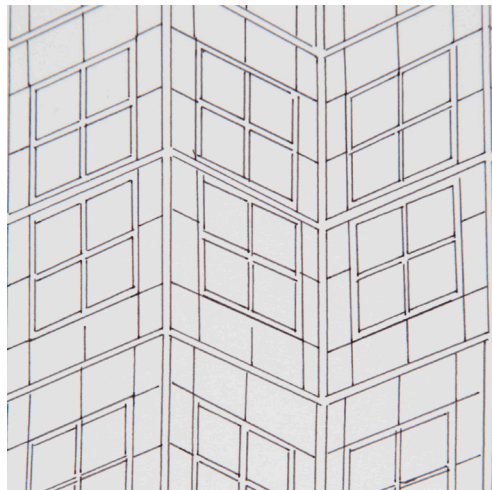
ZIXI QU

xixizixiqu@yahoo.co.uk
www.zixiqu.tumblr.com/
www.zixiqu.co.uk

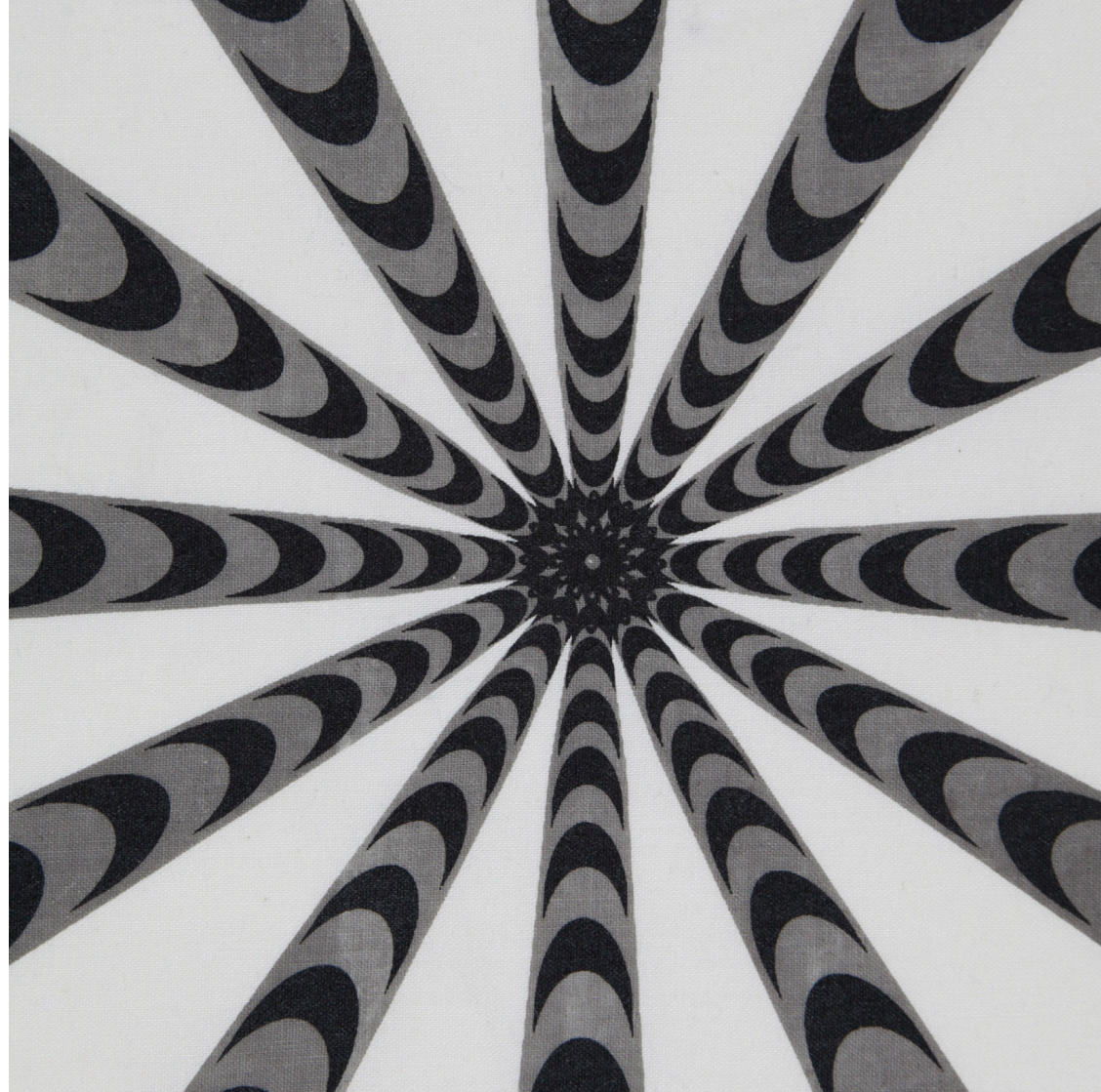


Placements: *Forte Cloth Ltd* - Stourport on Severn

Prizes: 1st prize 'Student Rug Design Competition 2010' - Goodweave



Garments are brought to life through dynamic patterns and shapes. Using thermochromic pigments and shape memory alloy wires, my fabric pieces emphasise parts of the body through illusionary designs, with changing lines and forms inspired by architectural themes.



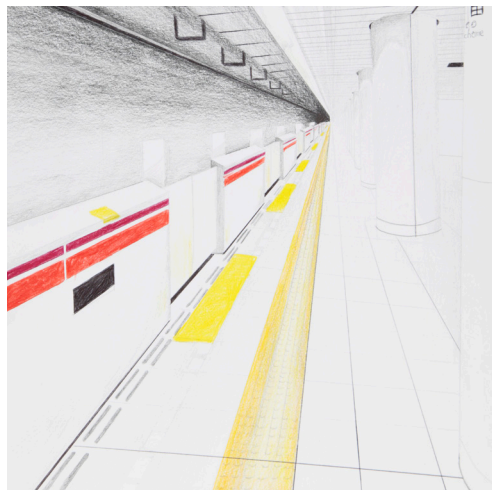
EMMA STOVIN

emmastovin@hotmail.co.uk
textiler.tumblr.com

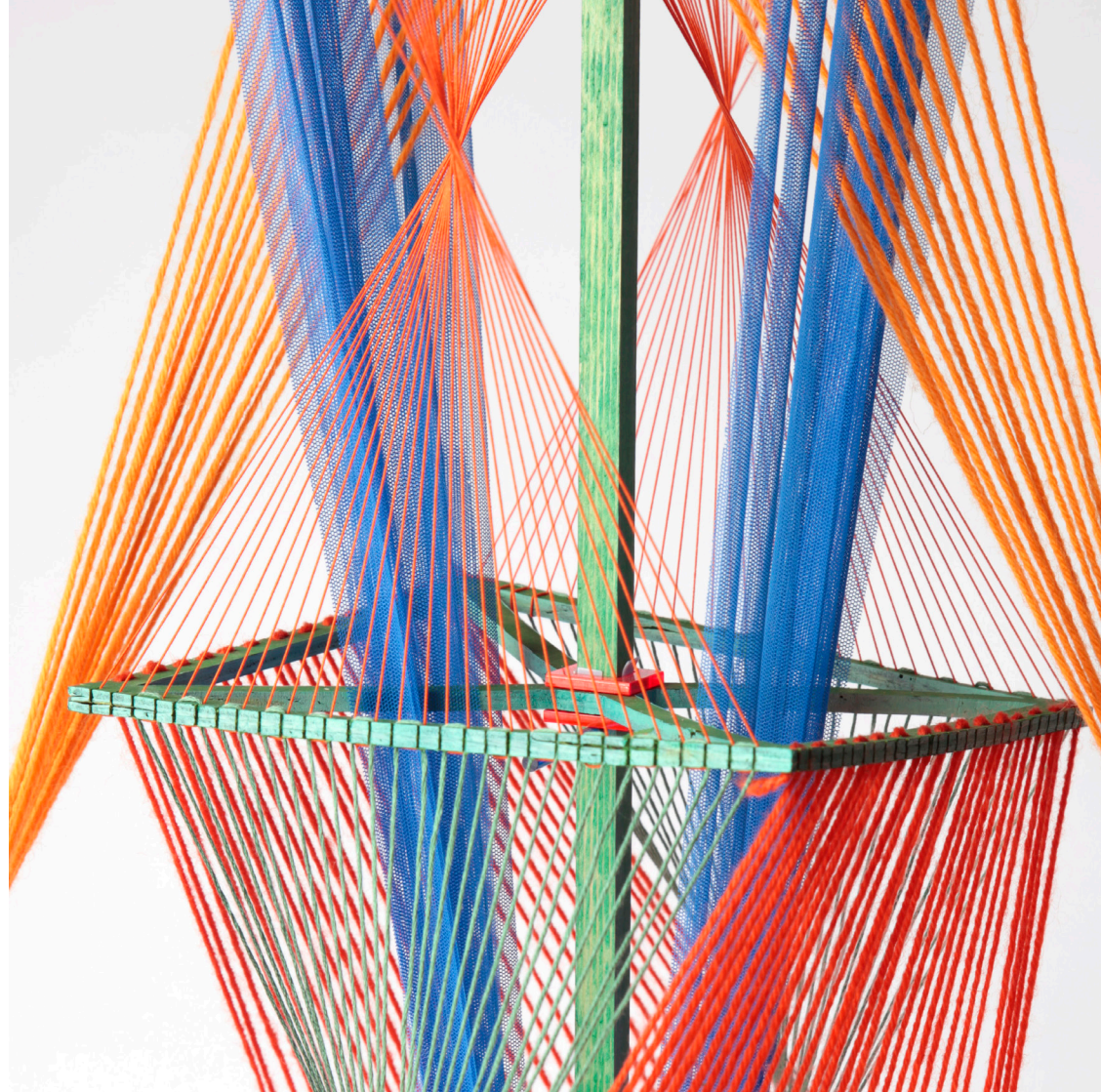


Placements:

Matthew Williamson - London, Tom Cody - London, J. Smith Esquire - London



Tokyo underground stations sparked a interest in infinite tunnels and the disorientation experienced during the commute, provoking a tactile response of colliding angles in thread and mirrored acrylic.



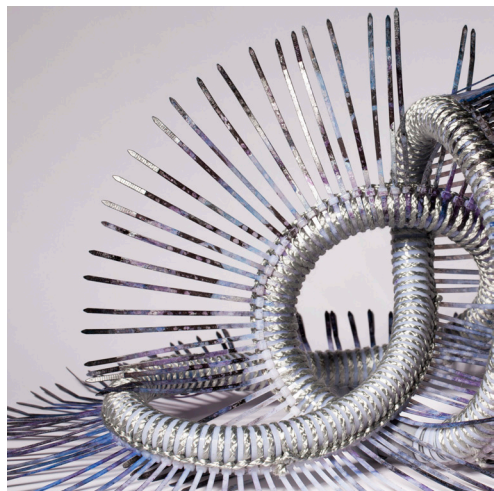
EMILY WAINWRIGHT

emily@emilywainwright.co.uk
www.emilywainwright.co.uk
www.studioemilywainwright.tumblr.com



Prizes: Creative Student Award 2012

Placements: *Jane Bowler* - London



By exploring the potential of stacking, repeating and joining 'ready-made' multiples, I have created a collection of tactile textiles samples which push the boundaries between fashion and textiles art.



KATHRYN WORTHINGTON

kathy_worthington@hotmail.co.uk



My work revolves around the notion of time, and how it affects the natural world. I aim to explore how a material or object can transform over a period of time, be it through growth or decay. I then utilize these transformations to create textile art pieces.

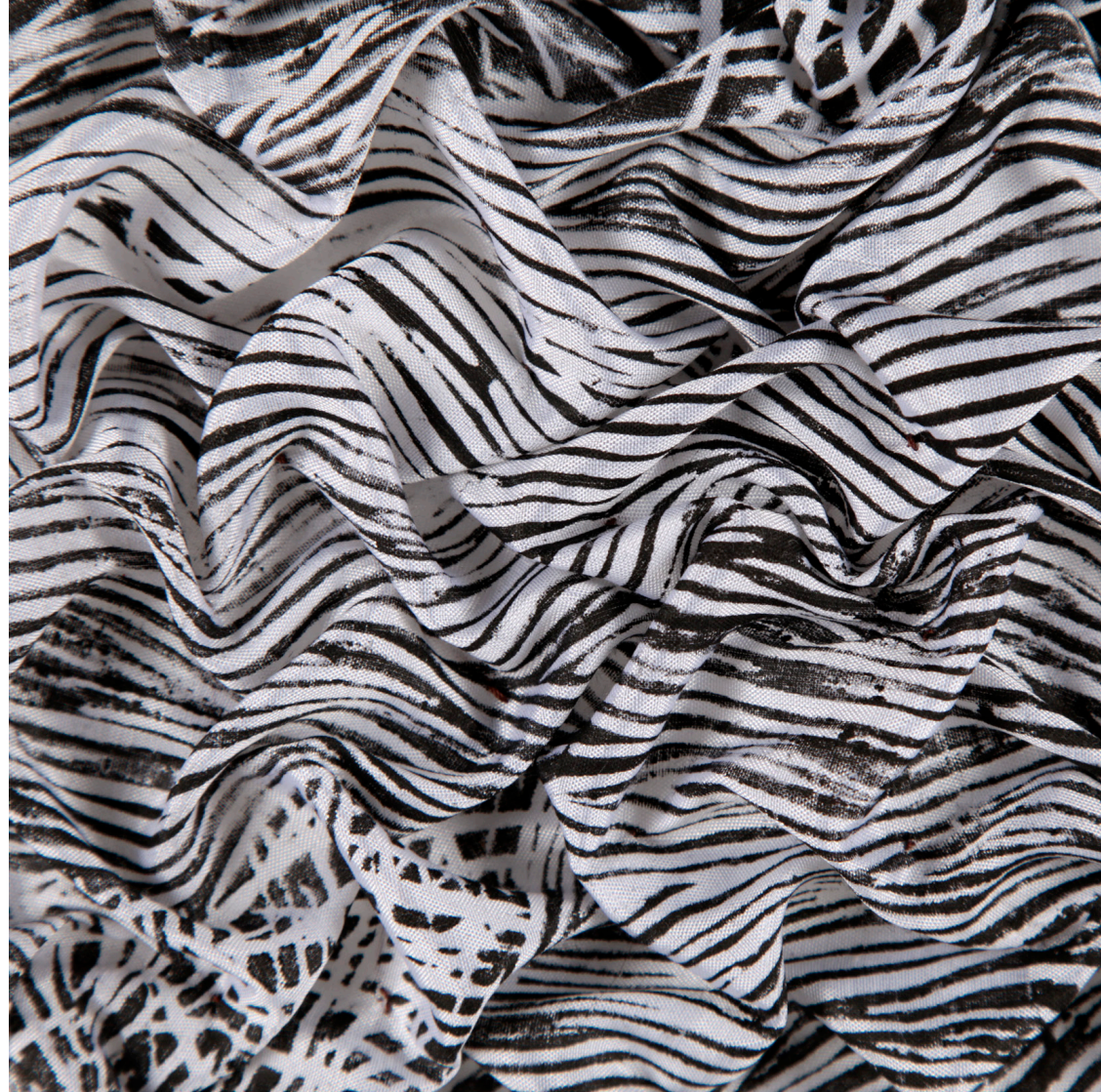


SHEENA YOLZARI

sheena_yolzari@yahoo.ie



My work explores the textural surface and uniqueness of our feet and skin. It showcases an exploration of line and detail to detract the viewer from the obvious image. I enjoy working with lino printing combined with hand stitch and also experiment with materials such as latex and leather, which gives my work a tactile nature.





Acknowledgements

Loughborough School of the Arts Staff

We have had immeasurable support from the Loughborough School of the Arts staff over the last three years, without whom this catalogue and our degrees would not be possible!

Kerry Walton - *Textiles Program Leader*

Tina Frank, Dan Heath and Gemma Ooi - *Print Tutors*
Jan Shenton, Jan Bowman and Dr Faith Kane - *Weave Tutors*
Nithikul Nimkulrat and Rachel Philpott - *MMT Tutors*

Matthew Broughton, Sarah Johnson,
Anne Acosta, Gillian Armstrong, Ria Hill,
Zara Pickett, Alex Palmer, Sally Yates,
Ben Dolman, Matthew Fray, Stuart Franey - *Technical Tutors*

Nicola Counley, Lynn Morris, Andrew Selby
and Jim White - *Administrative Staff*

A general thank you to all of the CHS and Dissertation tutors.

Special thanks to...

Becky Daly and Steve Ashurst and the rest of Design and Print Services, for all their help and time printing our catalogue and building our website.

Laura Cremin - Loughborough Illustration Graduate, for designing our fantastic Logo.

Chris McLean - Loughborough Graphics Graduate, for the many hours spent designing our catalogue layout and website graphics - chris@chris-mclean.com

Alan Duncan - Loughborough School of the Arts Photography tutor, for his help photographing the catalogue content.

Laurie Liaromatis - Loughborough Graduate, for taking the group photo.

The 2011 textiles committee for all their help setting up the rolling website.

Thank you to Tatty Devine and Jane Bowler for their contribution towards the London Degree Show.

Committee

Katie Austin and Connie Culliford	- <i>Co-chair women</i>
Jenny Craddock and Claire Martin	- <i>Catalogue</i>
Lisa Devonshire	- <i>Website</i>
Sarah Deamer and Jaymini Bedia	- <i>Secretary/Marketing</i>
Chloe Robinson and Jessica Gussin	- <i>Treasurers</i>
Jenny Purchase, Emma Stovin and Luke Harrison	- <i>London degree show</i>